



საქართველოს ტექნიკური
უნივერსიტეტის
ჰიდრომეტეოროლოგიის
ინსტიტუტი



საქართველოს ისეთივე და
ზვებთან ბრძოლის
სამსახურის განახლების
საკითხისათვის

**ON THE RESTORATION OF HAIL
SUPPRESSION AND ANTI-AVALANCHE
ACTIVITIES IN GEORGIA**

**К ВОПРОСУ О ВОЗОБНОВЛЕНИИ
ПРОТИВОГРАДОВЫХ И
ПРОТИВОЛАВИННЫХ РАБОТ В ГРУЗИИ**

Tbilisi
2013

მიმოხილვის ავტორები

Tengiz cincaZe

hidrometeorologია ინსტიტუტის დირექტორი,
ტექნიკის მეცნ. აკად. დოქტორი, საერთაშორისო
აკადემიის წევრ-კორესპონდენტი

bakur beritaSvili

hidrometeorologია ინსტიტუტის მთავარი მეცნიერი
თანამშრომელი, გეოგრაფიკის მეცნ. დოქტორი

naili kapanaZe

hidrometeorologია ინსტიტუტის უფროსი მეცნიერი
თანამშრომელი, გეოგრაფიკის მეცნ. აკად. დოქტორი

manana sal uqvaZe

hidrometeorologია ინსტიტუტის უფროსი მეცნიერი
თანამშრომელი, გეოგრაფიკის მეცნ. აკად. დოქტორი

***Tengiz Tsintsadze, Bakur Beritashvili,
Naili KapanaZe Manana Saluqvadze***

***Цинцадзе Т.Н., Бериташвили Б.Ш.,
Капанадзе Н.И., Салуквадзе М.Е***

uak 551.576:538.978

mTavari redaqtori:

nodar begal iSvil i

hidrometeorol ogiis institutis ganyofil ebis gamge,
fiz-maT.mecn.doqtori

Editor in Chief N.Begalishvili

Главный редактор Бегалишвили Н.А.

redkol egia: g.grigolia, e.el izbaraSvil i,
l .inwkirveli, m.tatiSvil i, g.gunia, g.mel aze,

Editorial Board:

G.Grigolia, E.Elizbarashvili, L.Intskirveli,,
M.Tatishvili,G.Gunia, G.Meladze

Редакционная коллегия:

Григолия Г.Л., Элизбарашвили Э.Ш., Инцкирвели Л.н.,
Татишвили М.А.,Гуния Г.С., Меладзе Г.Г.

recenzeti:

Tamaz Turmanidze

saqarTvel os sofl is meurneobis akademiis wevr-
korespodenti, geogr.mecn. doqtori

Reviewer:

Dr. Sci in Geography, Professor

Tamaz Turmanidze

Рецензент:

Доктор географических наук, профессор

Тамаз Турманидзе

ISBN978-9941--6156-1

saqarTvel os teqnikuri universitetis
hidrometeorol ogiis instituti

©

**Institute of Hydrometeorology of the
Georgian Technical University**

**Институт Гидрометеорологии
Грузинского Технического Университета**

2013

uak 551.576:538.978

naSromis pirvel TavSi ganxil ul ia saqarTvel oSi setyvasTan brZol is adre warmoebul samuSaoTa istoria, organizacia, gamoyenebul i teqno logia. mocemul ia bul gareTSi amJamad warmoebul i setyvasTan brZol is samuSaoebis struqtura, koncefcia, samuSaoebSi gamoyenebul i konveqciuri Rrubl isa da reagentis gavrcel ebis model ebi. ganxil ul ia setyvasaSiSi uj redebisa da setyviani Rrubl ebis kategoriebi da maTi gansazRvris kriteriუმები, zemoqmedebis strategia, teqnikuri saSual ebebi da kompiuterul i uzrunvel yofa, sacecxl e wertil is teqnikuri aRWurvil oba. Catarebul ia kaxeTsa da bul gareTSi setyvasTan brZol is samuSaoTa warmoebis Sedarebi Ti anal izi.

naSromis meore TavSi warmodgenil ia saqarTvel os zvasaSiSi teritoriebi, ganxil ul ia zvasawinaaRmdego RonisZiebebi da Tovl is zvavebis dacvis Tanamedrove meTodebi.

УДК 551.576:338.978

В первой главе работы рассмотрены история, организация и технология работ по борьбе с градом, которые велись ранее в Грузии. Приведены структура, концепция, используемые модели конвективных облаков и распространения реагента в ныне ведущихся работах по борьбе с градом в Болгарии. Рассмотрены категории градоопасных ячеек и градовых облаков, критерии их определения, стратегия воздействия, технические средства и компьютерное обеспечение, техническое оснащение огневой точки. Проведен сравнительный анализ ведения противоградовых работ в Кахетии и Болгарии.

Во второй главе представлены лавиноопасные районы Грузии, рассмотрены противолавинные мероприятия и современные методы защиты от снежных лавин.

UDC 551.576:338.978

In the first part the history, organizational structure and applied technology of hail suppression activities conducted earlier in Georgia are reviewed. The structure, concept, convective cloud and agent diffusion models used in ongoing hail suppression works in Bulgaria are discussed. Categories of hail-dangerous cells and hailstorms, criteria for their definition are considered along with the seeding strategy, technical means and software, and rocket launching site equipment. The comparative analysis of hail suppression activities undertaken in Georgia and currently being carried out in Bulgaria is performed.

In the second part the avalanche prone territories of Georgia are presented, anti-avalanche measures and modern methods of avalanche protection are described.

teqstSi gamoyenebul i special uri terminebis
gl osariumi

aerol ogiuri zondireba - atmosferoSi 40 km simaRl emde meteorol ogiuri el ementebis (haeris temperatura da sinotive, qari, atmosferul i wneva) vertikal uri ganawil ebs gazomva radiozondis saSual ebiT.

aerosinoptikuri monacemebi - atmosferoSi didi teritoriis (regioni, kontinenti, naxevarsfero) Tavze meteorol ogiuri el ementebis sivrcul i ganawil eba, romel ic saSual ebs iZl eva 40 km simaRl emde dadgenil iqnas ZiriTadi bariul i warmonaqmnebis (cikl oni, anticikl oni, atmosferul i frontebi, tropikul i qariSxl ebi da sxv.) konfiguracia da moZraobis siCqare, agreTve mocemul teritoriaze cal keul i Rrubl ebisa da saRrubl o sistemebis ganvitarebis Sesazl ebl oba. aRniSnul i monacemebis misaRebad saWiroa sxvadasxva. punqtebidan Catarebul i aerol ogiuri zondirebis masal ebs erTobl ivi anal izi.

amrekl adoba (radiol okaciuri) - Rrubel Si wyl is Txevadi da myari nawil akebis Semcvel obisa da zomebis ganmsazRvrel i fizikuri sidide, romel ic gaizomeba sxvadasxva. tal Ris sigrZeze momuSave radiol okatorebis saSual ebiT. misi ganzomil ebaa decibel i (dBz). es sidide saSual ebas iZl eva raodenobrivad Sefasdes Rrubl is struqtura da misi setyvasaSiS-roeba.

gadametcivebul i (wyal i, wveTi). uaryofiT temperaturaze Txevad fazaSi myofi wyal i. minarevebis gareSe wyl is mcire wveTebi atmosferoSi xSirad arseboben -20°C temperaturamde. minarevebis Setanisas wveTebi iwyeben gayinvas -5°C da ufro dabal temperaturaze.

gazrdil i amrekl adobis zona - Rrubel Si radiol okaciuri amrekl adobis are, romel ic SemosazRvrul ia amave Rrubel Si maqsimal ur amrekl adobaze erTi rigiT nakl ebi amrekl adobis izokonturIT.

grdeml i - setyvasaSiS stadiaSi gadasul i mZl avri konveqciuri Rrubl is grdeml is formis mqone zeda nawil i, romel ic yinul is kristal ebisgan Sedgeba.

decibel i - radiol okaciuri amrekl adobis sazomi erTeul i (saerTaSoriso aRniSvna dBz).

difuziuri Rrubel i - Rrubel Si Setanil i reagentis gavrcel ebis Sedegad warmoqmnil i are, romel Sic sublimaciisa da Rrubl is wveTebTan urTierTqmedebis Sedegad, agreTve atmosferul i turbul entobis zegavl eniT reagentis koncentracia droSi swrafad kl ebul obs.

zvavi - ferdobidan simZimis Zal is gavl eniT mowyvetil i garkveul i mocul obisa da siCqaris Tovl is masaa;

zvavSemkrebi - ferdobis, xevis an xeobis nawil ia, romel zedac warmoiqmneba, moZraobs da Cerdeba zvavi;

zvavis konusi - zvavis mier xeobaSi, an gzis saval nawil ze Camotanil i Tovl is masa, roml is simaRI e zogjer aTeul obiT metrs aRwevs;

Termiki - atmosferoSi konveqciuri moZraobis ZiriTadi Semqmnel i el ementi, romel ic warmoadgens garemosTan SedarebiT ufro Tbil i haeriT dakavebul sferul i formis mocul obas. kondensaciis donis miRwevis Semdeg Termiki, roml is diametri Cveul ebriv ramdenime km-s Seadgens, iqceva konveqciuri Rrubl is Semqmnel el ementad. atmosferoSi Rrubel Ta ganvitarebisTvis xel Semwyobi pirobebis arsebobisas Termikebis erTobl ioba qmnis haeris aRmaival nakadebs, ris Sedegadac warmoiqmneba konveqciuri Rrubl ebi.

katastroful i zvavi - rogorc sporadul i, ise sistematuri zvavi, romel ic scil deba Tavis Cveul sazRvrebs. mistvis damaxasiaTebel ia ngreva, dazianeba da adamianta msxverpli. saqarTvel oSi aseTi zvavebi teritoriis 36% -ze vrcel deba.

koagulacia - Rrubel Si wyl is wveTebis an yinul is kristal ebis urTierTSerwymis procesi, romel sac Tan sdevs saRrubl o nawil akebis zomebis zrda da, sabol oo j amSi maTi gamoyofa nal eqebis saxiT.

kondensacia - atmosferoSi arsebul aeroxol ur minarevebze wyl is wveTebis warmogmnis meqanizmi. am aeroxol ur nawil akebs Cveul ebriv kondensaciis gul ebs an kondensaciis birTvebs uwodeben.

konveqciuri uj redi - aRmaval TermikebSi wyl is orTql is kondensaciis Sedegad warmogmnili konveqciuri Rrubl is ZiriTadi strukturul i el ementi, romel ic saTanado pirobebSi SeiZl eba gardaiqmnas wwmis an setyvis momcem mZl avr konveqciur Rrubl ad.

meteograma - mocemul i adgil mdebareobisTvis atmosferoSi meteorol ogiuri el ementebis ganviTarebis saprognozo grafiki, romel ic Seicavs uaxl oesi 5-10 dRis ganmavl obaSi temperaturis, Rrubl ebisa da nal eqebis sxvadasxva. saprognozo model ebiT gaTvl il mosal odnel mniSvel obebs.

momwifebul i/simwifis stadiaSi myofi konveqciuri uj redi - maqsimal uri ganviTarebis stadiaSi myofi uj redi, romel ic xasiaTdeba haeris mZl avri aRmaval i nakadebisa da nal eqTa mzardi el ementebis - wyl is wveTebisa da setyvis marcvl ebis arsebobiT. nal eqebis gamoyofasTan erTad momwifebul i uj redi iwyebs disipaciis stadiaSi gadasvl as.

mraval uj rediani konveqciuri Rrubel i - ramdenime uj redisgan Semdgari kompl eqsuri konveqciuri Rrubel i, romel Sic uj redebi, SesaZl ebel ia ganviTarebis sxvadasxva. stadiaSi imyofebodnen. aseTi tipis konveqciuri Rrubel i SeiZl eba damoukidebl adac viTardebodes da SeiZl eba superuj rediani Rrubl is frontal ur nawil sac warmoadgendes.

nal eqTa xel ovnuri gazrda - samuSaoTa kompl eqsi, romel ic miznad isaxavs SerCeul teritoriaze drois garkveul monakveTsi (Tve, sezoni, wel i) Sesaferisi teqmol ogiis gamoyenebiT nal eqTa raodenobis gazrdas.

nukleacia - wyl is orTql is fazuri gadasvl is procesi, roml is drosac atmosferoSi arsebul minarevebze,

rogorc Canasaxebze, warmoiqmneba wyl is weTebi an yinul is kristal ebi.

reagenti - qimiuri nivTiereba, roml is Setana Rrubel Si iwvevs misi fazuri an kol oiduri mdgomareobis dar-Rvevas. pirvel SemTxvevaSi es aris makristal ebel i reagenti (umetes SemTxvevaSi iodovani vercxl is AgI Semcvel i nivTiereba), roml is nawil akebi uaryofiT temperaturaze iwvevs yinul is kristal ebis gaCenas saRrubl o weTebis gayinvis an wyl is orTql is maTze subl imaciis gziT. meore SemTxvevaSi es aris higroskopul i reagenti (umeteswil ad sufris maril i NaCl), roml is nawil akebi iwvevs maTze kondensaciis gziT wyl is weTebis warmoqmnas da am weTebis Semdgom koagul aciur zrdas.

satel ituri informacia - dedamiwis meteorol ogiuri xel-ovnuri Tanamgzavridan miRebul i satel evizio gamosaxul ebebi, roml ebic sxva informaciasTan erTad Seicavs monacemebs saRrubl o sistemebis tipis, geometriul i zomebisa da gadaadgil ebis mimarTul ebisa da siCqaris Sesaxeb.

sistematuri zvavi - yovel wl urad Camosul i zvavi. saqarTvel oSi aseT zvavebs teritoriis 20% ukaviaT; sporadul i zvavi - iSviaTi ganmeoradobis zvavi, romelic SesaZl ebel ia 2-3 wel iwadSi erTxel, an aTeul wel iwadSi erTxel Camovides;

sublimacia - atmosferoSi arsebul aerezol ur minare-vebze yinul is kristal ebis warmoqmnis meqanizmi. am aerezol ur nawil akebs Cveul ebriv subl imaciis gul ebs an yinul warmoqmnel birtvebs uwodeben.

superuj rediani konveqciuri Rrubel i - atmosferoSi arsebul i yvel aze mZl avri tipis konveqciuri Rrubel i, romelic Cveul ebriv, gansxvebul i haeris masebis Se-revis/konvergenciis zonaSi viTardeba. am Rrubel s, rogorc wesi, Tan axl avs wimisa da setyvis mosvl a, agreTve haeris mZl avri vertikal uri nakadis (tornado an Skval i) gaCena. misi simaRl e SeiZl eba aRwevdes 1517 km, xol o horizontal uri zomebi - ramdenime

aTeul kil ometers. Rrubel ma SeiZI eba iarsebos ramdenime saatS da gaiaros ramdenime aseul i kil ometri.

yinul ianoba - Rrubl is erTeul ovan mocul obaSi yinul is kristal ebisa da gayinul i wveTebis j amuri masa. misi ganzomil ebaa g/m^3 .

wyl ianoba - Rrubl is erTeul ovan mocul obaSi Txevad fazaSi myofi wyl is wveTbis j amuri masa. misi ganzomil ebaa g/m^3 .

Semokl ebebi

gaz - gazrdil i amrekl adobis zona.

nxg - nal eqTa xel ovnuri gazrda.

r/l - radiol okaciuri.

LED - sinaTI is gamasxivebel i diodi.

RAPIRA - radiol okaciuri da aerol ogiuri informaciis real ur droSi anal izis sistema.

WMO - msofl io meteorol ogiuri organizacia.

Si naarsi

wi nasi tyvaoba.....	12
Tavi I. setyvasTan brZol is samuSaoTa ganaxl ebis saki Txi saTvi s.....	14
1. setyvasTan brZol is samuSaoTa istoria saqarTvel oSi.....	14
1.1. savel e samuSaoebi.....	16
1.2. samecni ero gamokvl evebi.....	19
1.3. arsebul i mdgomareoba.....	20
2. kaxeTSi warmoebul setyvasTan brZol is samuSaoTa organi zacia.....	21
3. kaxeTis regionSi setyvasTan brZol is gamoyenebul i teqnol ogia.....	25
4. setyvasTan brZol is samuSaoebi bul gareTSi.....	31
4.1. setyvasTan brZol is samsaxuris struqtura.....	31
4.2. samuSaoTa organi zacia.....	33
4.3. setyvasTan brZol is koncefcia.....	35
4.4. atmosferul i pi robebis aerosinoptikuri anal izi.....	37
4.5. konveqciuri Rrubl is erTganzomil ebiani model i mikrofizikis parametrizaci iT.....	37
4.6. Rrubel Si reagentis gavr cel ebis model i.....	40
4.7. setyvasaSiSi uj redebisa da setyvi ani Rrubl ebis kategori ebi da maTi gansazRvris kri teri u mebi.....	41
4.8. zemoqmedebis strategia.....	45
4.9. teqniki uri saSual ebebi da kompiuterul i uzrunvel yofa.....	47
4.10. sacecxl e wertil is teqniki uri aRWurvil oba.....	51
5. kaxeTsa da bul gareTSi setyvasTan brZol is samuSaoTa warmoebis Sedarebi Ti anal izi.....	56
Tavi II. zvavsawi naaRmdego Roni sZi ebebi.....	61
6. zvavsawi naaRmdego Roni sZi ebebi s kl asi fi kaci a.....	61
7. saqarTvel os zvasaSiSi teri toriebi.....	62
8. zvasawi naaRmdego Roni sZi ebebi s kategori ebi.....	64

9	zvavsawi naaRmdego nagebobebi	65
10	asafeTqebel i nivTierebibisa da artil eriis gamoyeneba.....	73
11	Tovl is zvavebisagan dacvis Tanamedrove meTodebi.	74

wi nasi tyvaoba

kl imatis gl obal uri daTbobis zegavl eniT gavl il i 20 wl is manZil ze msopl ios yvel a regionSi aSkarad gamovl inda amindis eqstremal uri movl enebis gamZafreba, rac did zaral s da msxverpl s iwvevs. saqarTvel oSi am movl enebma Tavi iCina wyal movardnebis, ZI ieri Stormebis, mewyerebis, zvavebis da setyvianobis gaxSirebiT. es Sesabamis reagirebas moITxovs qveynis mTavrobis mxridan, romel ic val debul ia gaataros am stiqiuri movl enebiT miyenebul i zaral is Semarbil ebel i RonisZiebebi.

kaxeTi, romel ic sasopl o-sameurneo warmoebis da mevenaxeobis erT-erT wamyvan regions warmoadgens, bol o wl ebSi yovel wl iurad aRiniSneba ZI ieri setyvis mosvl is SemTxvevebi, rac mniSvnel ovnad azaral ebs sofl is mosaxl eobas da iwvevs mis ukmayofil ebas gasul i saukunis 60-ian – 80-ian wl ebSi aq warmoebul setyvasTan brZol is samuSaoTa Sewyvetis gamo. sagul isxmoa, rom anal ogiuri samuSaoebi roml ebic saqarTvel os gamocdi- l ebaze dayrdnobiT, mogvianebiT daiwyo sxva yofil sabWoTa respubl ikebSi, agreTve bul gareTSi, 1990-iani wl ebidan ar Sewyvetil a da Tanamedrove teqno- logiebis gamoyenebiT amJamadac grZel deba. setyvasTan brZol is samuSaoebi cal keul i proeqtebis saxiT mimdinareobs agreTve aSS-Si, kanadaSi, argentinaSi, samxreT afrikaSi, safrangeTSi da sxv. yovel ive aman ganapiroba saqarTvel os mTavrobaSi sakiTxis dasma kaxeTis regionSi setyvasTan brZol is samuSaoebis aRdgenis Taobaze, ramac garkveul i wvl il i unda Seitanos qveynis ekonomikis prioritetul i dargis – sofl is meurneobis efeqtianobis gazrdaSi da Seqmnas regionis fermerebisatvis amindis Wirveul obisgan ufro dacul i Sromis pirobebi. imis gaTval iswinebiT, rom setyvasawinaaRmdago, nal eqebze aqtiuri zemoqmedebis da zavsawinaaRmdago samuSaoebi dakavSirebul ia garkveul i tipis sabrZol o teqnikis gamoyenebasTan, aRniSnul i amocanis gadaWra daeval a saqarTvel os Tavdacvis saministros ssip saxel mwifo samxedro samecniero- teqnikur centr “del tas”, romel mac 2013 wel s daiwyo

mosamzadebel i saqmianoba aRniSnul i mimarTul ebiT samuSaoTa gasaSi el ad. gasul i ori aTeul i wl is manZil ze am dargSi daSvebul i CamorCenis dasaZl evad miRebul iqna gadawyvetil eba bul gareTis setyvasTan brZol is sam saxurTan saTanado kontaqtebis damyarebis Sesaxeb, rac ganpirobepul ia am qveynis geografiul i da kl imaturi pirobebis msgavsebiT saqarTvel os pirobebTan, agreTve setyvis sawinaaRmdago samuSaoTa warmoebis maRal i doniT.

aranakl eb did zians ayenebs saqarTvel os mTian regionebs Tovl is zvavebic, roml ebTan brZol is didi tradiciebi gaaCnia svaneTisa da sxva kuTxeebis mosaxl eobas. uxvi nal eqebis gaxSirebis gamo amJamad am mimarTul ebis aqtual obac gaizarda.

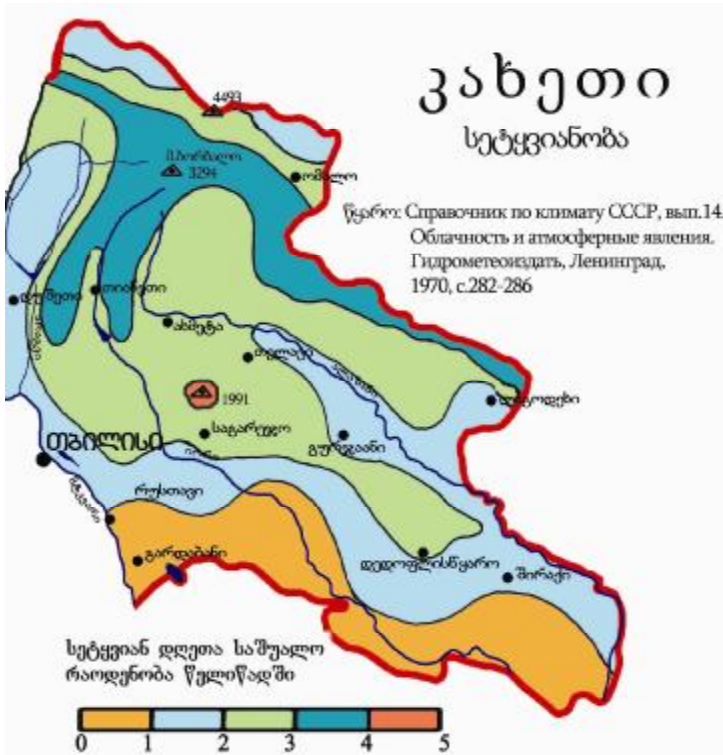
amasTan dakavSirebiT saqarTvel os teqnikiuri universitetis hidrometeorol ogiis instituts, romel ic gasulli saukunis meore naxevarSi aqtiurad monawil eobda samxreT kavkasiaSi setyvasTan brZol isa da nal eqTa regul irebis, agreTve zavsawinaaRmdago samuSaoebSi, daeval a mokl e mimoxil vis momzadeba saqarTvel oSi, da kerZod kaxeTSi, 1980-ian wl ebSi setyvasTan brZol is samuSaoTa organizebisa da amJamad am samuSaoTa bul gareTSi warmoebis, zavsawinaaRmdago RonisZiebis Tanamedrove mdgomareobis Sesaxeb.

winamdebare mimoxil va miznad isaxavs zogadad gaacnos qarTvel eqsper tebs aRniSnul dargSi adre da amJamad gamoyenebul i teqnoL ogiebi da moamzados niadagi saqarTvel oSi setyvasTan brZol is da zavsawinaaRmdago samuSaoTa Tvisobrivad axal doneze aRsadgenad.

Tavi I.setyvasTan brZol is samuSaoTa ganaxl ebi s saki Txi saTvi s

1.setyvasTan brZol is samuSaoTa istoria saqarTvel oSi

bol o ori saukunis manZil ze setyvasTan brZol a aq-tual ur probl emad iqca kaxeTSi. gasul i saukunis da-sawyisSi am mizniT ukve gamoiyeneboda mort irebi, romel -Ta gasrol isas warmoqmnil akustikur tal Ras, maSinde- l i warmodgeniT, xel i unda SeeSal a setyvis warmoqmnis procesisaTvis. nax.1-ze 1970-iani wl ebi s monacemebiT war- modgenil ia setyvianobis sixSiris ganawil eba kaxeTis teritoriaze.



nax.1. setyvianobis ganawil eba kaxeTis teritoriaze 1970- iani wl ebi s monacemebiT.

ამ ნახაზიდან ჩანს, რომ კახეთის უმეტეს ნაწილში ივადის ერთ-მესამე კავკასიონის ფერდობზე და ცივგობორის ვეღის მარალ ზონაში ეს სიდიდე ივრდება 45-მდე, სეთვიან დრეტა რაოდენობის მაქსიმუმი ივადში სეიზი ება არვევდეს 8-10, კავკასიონის მარალ მთიან ზონაში კი 20-ს (ნახ.2).



ნახ.2. სეთვიან დრეტა მაქსიმალური რაოდენობის განაწილება კახეთის ტერიტორიაზე (1983).

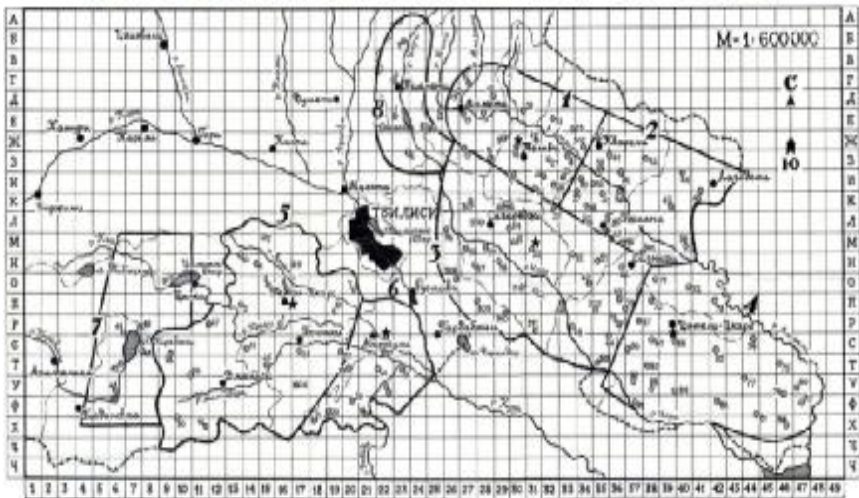
1.1. savel e samuSaoebi

konveqciuri Rrubl ebisa da maTTan dakavSirebul i nal eqebis (TqeSi wvima, setyva) Seswavl a saqarTvel oSi daiwyo gasul i saukunis 50-ian wl ebSi geofizikis instituttsa (a. qarCivaZe, a. buxnikaSvil i, a. bal abuevi) da hidrometeorol ogiis institutSi (v. l ominaZe, v. gigneiSvili, i. barTiSvil i). 50-iani wl ebis dasasrul isaTvis sabWoTa kavSirSi Seiqmna setyvasTan brZol is special uri teqnikiuri saSual ebebi (setyvasawinaaRmdego raketebi `pgi-, `obl ako-, mogvianebiT sazeni to Wurvebi `el brusi-). Rrubl ebze dakvirvebisa da zemoqmedebis operacieb is Casatarebl ad gamoiyeneboda samxedro daniSnul ebis radiol okatorebi, ars-3 ($\lambda=3.2$ sm) da son-4 ($\lambda=10$ sm).

setyvasTan brZol is sacdel -sawarmoo samuSaoTa pirvel i samsaxuri geofizikis institutis xel mZRvanel obi T Seiqmna 1959 wel s al aznis vel ze (a. qarCivaZe, a. buxnikaSvil i), xol o 1960 wel s hidrometeorol ogiis institutma anal ogiuri sacdel i samuSaoebi daiwyo faravis tbis auzSi (v. l ominaZe, i. barTiSvil i). 1964 wl idan sawarmoo samuSaoebi geofizikis institutis xel mZRvanel obi T gaiSal a kaxeTis raionebSi da hidrometeorol ogiis institutis xel mZRvanel obi T _ qvemo qarTI is raionebSi. kaxeTSi reagentis (AgI, PbI₂) Setana Rrubl ebSi warmoebda raketebis saSual ebiT, xol o qvemo qarTI Si _ saartil erio WurvebiT. 60-iani wl ebis Sua periodidan hidrometinstitutSi SemuSavda setyvasTan brZol is original uri meTodika, romel ic gul isxmobda Rrubl is erTdroul damuSavebas sazeni to Wurvebis gamoyenebiT rogorc makristal ebel i (AgI), ise higroskopul i (NaCl) reagentiT.

1980-ian wl ebSi dasacavi teritoriebis farTobma kaxeTSi 650 aTasi ha-s miaRwia, xol o qvemo qarTI Si 350 aTas ha-s (nax.3). kaxeTSi zemoqmedeba warmoebda erT da orsafexuriani `al aznis- tipis raketebis gamoyenebiT, roml ebiC mZaddeboda ruseTSi, q. CapaevskSi.

КАРТА РАЙОНА РАБОТ ВС ГРУЗ УГКС



УСЛОВИЯ СЪОБЩЕНИЯ

Границы охраняемой территории безопасности имеют:

- 1 - Кельмеский, 2 - Тбилисский, 3 - Сабуртальский,
- 4 - Дзидзицарский, 5 - Мцхетский, 6 - Нордусский
- ★ - Командные пункты безопасности имеют
- - Кресты безопасности

Границы районных работ безопасности имеют по безопасности имеют:

- 8 - Кресты, 7 - Кресты-Параллельно
- - Районные пункты безопасности
- Граница Ленинградского района

1985

ნახ.3. სეთვისან ბრჯოლ ის გასამხედროებულ ი სამსახურის სამოქმედო ტერიტორიის სქემა. სეთვისან ბრჯოლ ის გასამხედროებულ ი ნაწილები დასაცავი ტერიტორიები: 1-თელიავის, 2-გურჯაანის, 3-საგარეჯოს, 4-დედოფლისწყაროს, 5-მცხეთის, 6-ნორდუსის. ნაწილები: 7-ფარავნის, 8-იორის

მატი ფასი შესაბამისად შეადგენდა 100 და 150 მანეთს. სეზონზე დაწვრილები იქარჯებოდა 10-დან 30 ატასამდე რაკეტა, რომლებიც არწვრილი იყო 16.8 გ მაკრისტალ ებელი რეაგენტი (1980 წლამდე PbI_2 , შემდეგ $Si AgI$). რეაგენტების მოქმედების რადიუსი შეადგენდა 5 კმ, ორსაფეხურიანისა კი 10 კმ.

1970-ian wl ebSi operaciebis Casatarebl ad gamoiyeneb-oda meteorol ogiuri radiol okatorebi mrl -2, xol o SemdgomSi mrl -5 (nax. 4), roml ebic mZaddeboda q.gorkSi (niJni novgorodi) da maTi Rirebul eba 600-800 aTas ma-neTs Seadgenda.



nax. 4 meteorol ogiuri radiol okaciuri sadguri mrl -5

kaxeTis dasacav teritoriaze funqcionirebda 4 gasamxedroebul i nawil i sakomando punqtebiT ruispirSi (Tel avis raioni), gurj aanSi, badiaurSi (sagarej os raioni) da dedofl iswyaroSi. samuSao sezoni grZel deboda 1 april idan 30 oqtombramde. teritoriaze moqmedebda 100-mde sacecxl e wertil i, roml ebic xel iT asrul ebda sakomando punqtidan miRebul brZanebebs. yvel a sacecxl e

wertil i uzrunvel yofil i iyo sayofacxovrebo pirobe-
biTa da misasvl el i gzebiT. ramdenime maRal mTian wer-
til s Sveul mfreni emsaxureboda.

qvemo qarTI Si zemoqmedeba warmoebda sazeni to qveme-
xebis `ks- gamoyenebiT. sakomando punqti TeTriwyaroSi
iyo ganTavsebul i. sazeni to Wurvi `el brusi- Seicavda
16.5 gramamde iodovan vercxl s, an 240 g sufris maril s.
TiToeul i Wurvis moqmedebis radiusi 12 km-mde aRwevda,
xol o Rirebul eba 120 maneTs Seadgenda. operaciebis Ca-
satarebl ad aqac gamoiyeneboda mrl -2 da mrl -5 radiol -
okatorebi. sacecxl e wertil ebi xel iT imarTeboda.

80-ian wl ebSi iyo mcdel oba zemoqmedebis operaciebi
avtomatur reJimSi Catarebul iyo, magram teqnikuri mize-
zebis gamo es mcdel oba uSedegod dasrul da.

setyvasTan brZol is samuSaoebis paral el urad 1980-
ian wl ebSi gasamxedroebul i samsaxuri 2 pol igonze aw-
armoebda agreTve nal eqTa xel ovnuri gazrdis (nxg) sac-
del sawarmoo samuSaoebsac. ioris pol igonze, hidrome-
teorol ogiis institutis samecniero-meToduri xel -
mZRvanel obiT, es samuSaoebi tardeboda Tel avis gasam-
xedroebul nawil Si Semaval i cal ke razmis mier, xol o
faravis pol igonze – TeTriwyaros nawil Si Semaval i
razmis mier.

1.2. samecniero gamokvl evebi

setyvasTan brZol is operatiul samuSaoebTan erTad
1960-iani wl ebidan saqarTvel oSi intensiurad mimdinare-
obda Rrubel Ta fizikisa da nal eqTa regul irebis dar-
gSi Teoriul i da l laboratoriuil i samuSaoebic. geofiz-
ikis institutSi Teoriul i gamokvl evebi ZiriTadad kon-
centrirebul i iyo setyvis warmoqmnis procesebze makris-
tal ebel i reagentis zemoqmedebis Seswavl aze, xol o hid-
rometeorol ogiis institutSi _ nal eqwarmomqmnel pro-
cesebze higroskopul i reagentis gavl enis dadgenaze.
1970-ian wl ebSi orive institutSi Rrubl ebSi mimdinare
procesebis eqsperimentul i model irebiTvis agebul iqna
saRrubl o kamerebi.

geofizikis institutis 40 m simaRI is kameraSi -30°C-
mde temperaturis pirobebSi Seiswavl eboda setyvis mar-
cvl ebis zrdis Taviseburebebi xol o hidrometeorol og-
iis institutis 250 m mocul obis kameraSi – dadebiT tem-
peraturaze mimdinare nal eqwarmoqmnis procesebi. am kame-
rebSive da ufro mcire danadgarebSi gamoicdeboda sxva-
dasxva tipis reagentebi.

setyvasTan brZol is dargSi saqarTvel oSi warmoeb-
ul samuSaoTa pionerul i xasiaTis aRIarebas mowmobda
is faqti, rom 1962 da 1969 wl ebSi Tbil isSi Catarda
Rrubel Ta fizikisa da aqtiuri zemoqmedebis maRal i do-
nis saerTaSoriso konferenciebi, xol o Semdgom wl ebSi
qarTvel i mecnierebi farTod monawil eobdnen sxvadasxva
qveynebSi Catarebul am mimarTul ebis mraval Sexvedreb-
Si.

1.3. arsebul i mdgomareoba

1990 wl idan dawyebul ma pol itikurma procesebma da-
mangrevel i zemoqmedeba moaxdina setyvasTan brZol is sa-
muSaoebze: finansirebis Sewyvetis gamo gapar taxda sako-
mando punqtebi, ganadgurda radiol okaciuri teqnika, sa-
raketo da saartil erio danadgarebi gamoyenebul iqna
samoqal aqo dapirispirebis sabrZol o moqmedebebSi, gai f-
anta zemoqmedebis kval ificiuri kadrebi, romel Tagan am-
Jamad mxol od 10 special istamdea SemorCenil i. amrigad,
aRniSnul dargSi savel e samuSaoTa aRdgena Tanamedrove
teqnoI ogiebis gamoyenebiT faqtobrivad nul idan iqneba
sawarmoebel i.

rac Seexeba samecniero gamokvl evebs, isini SezRudu-
l i saxiT grZel deba geofizikisa da hidrometeorol o-
giis institutebSi. pirvel maTganSi es samuSaoebi moi-
cavs, ZiriTadad, kaxeTis regionSi Catarebul i samuSaoeb-
is Sedegebis anal izs da setyvis zrdis procesebis cal-
keul i aspeqtების Seswavl as, xol o meoreSi – konveqci-
uri Rrubl ebis model irebis sakiTxebs.

2. kaxeTSi warmoebul setyvasTan brZol is samuSaoTa organizacia

1960 wl idan kaxeTSi setyvasTan brZol is samuSaoebs awarmoebda saqarTvel os sofl is meurneobis saministros sistemaSi Semaval i setyvasTan brZol is gasamxedroebul i samsaxuri. mis operatiul saqmianobas samecniero-meTodur xel mZRvanel obas uwevda saqarTvel os mecnier-ebaTa akademiis geofizikis instituti. daarsebis dRidan 1986 wl amde samsaxurs xel mZRvanel obda geofizikis institutis Rrubel Ta fizikis ganyofil ebis gamge a.qarcivaZe. 1986 wl idan gasamxedroebul i samsaxuri Sevda saqarTvel os hidrometeorol ogiisa da garemos kontrol is sammarTvel os daqvemdebarebaSi, rac gamowveul i iyo ssrk teritoriaze setyvasTan brZol is yvel a qvedanayofebis erTiani meTodikiT muSaobis moTxovniT.

1980-iani wl ebisTvis kaxeTis teritoriaze moqmedi setyvasTan brZol is gasamxedroebul i samsaxuri (sbgs), romel ic awarmoebda 650 aTas ha farTobze setyvisagan dacvis samuSaoebs, Sedgeboda 4 gasamxedroebul i nawil isagan, romel Ta sakomando punqtebi mdebareobda ruispirSi (Tel avi), gurj aanSi, badiaurSi (sagarej o) da qoCebSi (dedofl iswyaro). nawil ebis SeTanxmebul muSaobas saerto xel mZRvanel obas uwevda ruispirSi ganTavsebul i sbgs central uri sammarTvel o, romel ic Sedgeboda Semdegi ganyofil ebebi sagan: administracia, zemoqmedebis, radiol okaciis, saraketo teqniki, kavSirgabmul obisa da sameurneo ganyofil ebebi.

- administracia xel mZRvanel obda samsaxuris saqmianobas yvel a sferoSi: sakadro, safinanso, material ur-teqnikuri momaragebis, agreTve samecniero-meTodur sakiTxebSi. Sesabamisad, masSi Sedioda kadrebis seqtori da buRal-teria.

- zemoqmedebis ganyofil eba uzrunvel yofda oTxive gasamxedroebul nawil Si zemoqmedebis samuSaoTa erTiani meTodikiT warmoebas, dRis ganmavl obaSi Catarebul i zemoqmedebis Sesaxeb, angariSebis Sedgenas da maT detalur ganxil vas, sezonis dasrul ebis Semdeg samsaxurSi

Catarebul i zemoqmedebis operaciebis Sej amebas, anal izsa da j amuri angariSis Sedgenas.

- radiol okaciis ganyofil eba uzrunvel yofda gasamxedroebul nawil ebSi moqmedi radiol okaciuri sadgurebis gamarTul muSaobas, sadgurebis parametrebis Sesabamisobas miRebul standar tebTan.

- saraketo teqniki ganyofil ebis moval eobaSi Sedioda sacecxl e wertil ebze (zemoqmedebis punqtebze) moqmedi saraketo gamSvebi danadgarebis gamarTul i muSaobis uzrunvel yofa, sakomando punqtidan miRebul i brZanebebis operatiul i Sesrul eba, raketebis Senaxvisa da punqtebze discipl inis wesebis dacva.

- kavSirgabmul obis ganyofil eba uzrunvel yofda central uri sakomando punqtis kavSirs xel mZRvanel organoebTan da sahaero moZraobis marTvis centrTan, kavSirs gasamxedroebul i nawil ebis sakomando punqtebsa da sacecxl e wertil ebs Soris.

- sameurneo ganyofil eba axorciel ebda samsaxuris momaragebas sabrZol o teqnikiT (radiol okatorebiT, raketebiT da gamSvebi danadgarebiT), avtotransportiTa da sawvaviT, formis tansacml iT, sakomando punqtebisa da sacecxl e wertil ebis funqcionirebisaTvis saWi ro masal ebiT da sxv.

TiToeul gasamxedroebul nawil Si Sedioda daaxl oebiT 20-25 zemoqmedebis punqti, roml ebzedac momsaxure personal i uzrunvel yofil i iyo minimal uri sayofacxovrebo pirobebiT (mcire zomis martivi saxl i, maRal mTian punqtebze-karavi), gazquriT, el eqtromomaragebiTa da misasvl el i gziT. maRal mTian punqtebze raketebisa da sxva masal ebis misawodebl ad gamoiyeneboda vertmfreni, romel ic samuSao sezonze mimagrebul i iyo gasamxedroebul samsaxurze.

TiToeul i gasamxedroebul i nawil is baza warmoadgenda misasvl el i gziT, el eqtro - da wyal momaragebiT uzrunvel yofil Semofargl ul teritorias, romel zedac ganTavsebul i iyo erTi an ramdenime radiol okaciuri sadguri, standartul i tipis sakomando punqti srul i

wriul i xil vadobiT, administraciul i Senoba, momsaxure personal is sacxovrebel i korpusebi, saxel osnoebi da damxmare saTavsoebi.

gasamxedroebul i samsaxuris central uri baza moicavda central uri sakomando punqtis samsarTul ian Senobas, romel Sic damontaJebul i iyo 2 radiol okaciuri sadguri, ganTavsebul i iyo zemoqmedebisa da kavSirgabmul obis centrebi, samsaxuris administracia da ganyofil ebebi, saaqto darbazi da sxva saTavsoebi. central ur bazaze cal ke Senoba ekava aerosinoptikur j gufs, romel ic special uri arxebiT Rebul obda Tanamgzavrul da aerosinoptikur informacias atmosferoSi 20 km simarlemde kavkasiis regionis fargl ebSi mimdinare procesebis Sesaxeb da miRebul i monacemebis safuZvel ze iZl eoda dRe-Ramis ganmavl obaSi mosal odnel i movl enebis prognoz. central ur bazaze funcionirebda agreTve sastumro, sasadil o da bibli oTeka. aqve ganTavsebul i iyo samsaxuris central uri sawyobi, avtofarexi, saxel osnoebi da momsaxure personal is 2 mraval biniani sacxovrebel i korpusi. baza uzrunvel yofil i iyo special -uri dadubl irebul i el eqtro momaragebiT, sakuTari wyal momaragebiT da wyl is gamwmendi nagebobiT. bazidan 1 km moSorebiT agebul i iyo raketebis special urad daproeqtebul i sawyobi, roml idanac maragdebodnen cal keul i gasamxedroebul i nawil ebi.

gasamxedroebul samsaxurSi zemoqmedebis sezoni grZel deboda april is dasawyisidan oqtombris bol omde. noember-dekemberSi mimdinareobda Catarebul i samuSaoebis Sej ameba, anal izi da angariSebis gaformeba, xol o Teberval -martSi tardeboda zemoqmedebis, radiol okaciis, saraketo teqnika da kavSirgabmul obis ganyofil ebaTa momsaxure personal is treningebi.

zemoqmedebis sezonis ganmavl obaSi TiToeul gasamxedroebul nawil Si axal i samuSao dRe iwyeboda 12 saatze, rodesac special istebis saerto krebaze jamdeboda gasul i dRe-Ramis Sedegebi da igegmeboda momaval i dRe-Ramis saqmianoba. ruispiris central ur sakomando

punqtze TaTbirs (Stabis sxdomas) eswreboda samsaxuris mTel i xel mZRvanel oba. moxsenebas gavl il dRe-RameSi Catarebul i saqmianobis Sesaxeb akeTebda gavl il i dRis samsaxuris morige xel mZRvanel i, romel ic, rogorc wesi, iniSneboda samsaxuris xel mZRvanel i personal idan. zemoqmedebis Catarebis SemTxvevaSi samuSao dRis anal izisas detal urad ixil eboda zemoqmedebis Catarebul i operaciebi da fasdeboda maTi efeqturoba. Tu dasacav teritoriaze adgil i hqonda setyvis mosvl is SemTxvevas, ganixil eboda dasetyvil i teritoriis Semowmebis Sedegebi, romel sac operatiul ad atarebda special urad momzadebul i j gufi. amis Semdeg ganixil eboda sxva gasamxedroebul nawil ebSi Catarebul i samuSaoebis Sedegebi.

Catarebul i operatiul i muSaobis Sej amebis Semdeg moismineboda aerosinoptikuri j gufis xel mZRvanel is informacia, romel ic Seicavda gavl il i dRis aerosinoptikuri situaciis diagnozs da momaval i dRis prognozs. am informaciis safuZvel ze miiReboda gadawyvetil eba momaval i dRis ganmavl obaSi operatiul i saqmianobis Sesaxeb, agreTve iniSneboda dRis morige Semadgenl oba. TaTbiris Catareba 12 saatze ganpirobebul i iyo imiT, rom am droistvis unda moswrebul iyo wina dRes Catarebul i zemoqmedebis operaciebis Sesaxeb angariSis Sedgena, rac Zl ieri procesebis SemTxvevaSi sakmaod Sromatevad proceduras warmoadgenda. amave dros mxedvel obaSi miiReboda isic, rom kaxeTis regionSi adgil obrivi Zl ieri konveqciuri procesebi, umeteswil ad, dRis meore naxevarSi viTardeba, xol o frontal ur procesebs, ZiriTadad, saRamosa da Ramis saaTebSi aqvs adgil i.

daaxl oebiT anal ogiuri wesiT tardeboda yovel dRiuri TaTbir-garCevebi regionis sxva gasamxedroebul nawil ebSi. gasamxedroebul i samsaxuris muSaoba da misi Sedegebi mudmivad imyofeboda respublikis umaRl esi xel mZRvanel obis yuradRebis qveS, rac uzrunvel yofda mis saqmianobaSi sistematuri daxmarebis gawevas.

warmoebul samuSaoTa garemoze ekol ogiuri zemoqmedebis Sesafasebl ad Tbil isis saxel mwifo universite-

tis, geofizikis da hidrometeorol ogiis institutebis special izebul i jgufebis mier kaxeTis teritoriaze sistematurad warmoebda Sesabamisi gamokvl evebi.

1970-iani wl ebis dasasrul s setyvasTan brZol is gasamxedroebul samsaxurSi Seiqmna nal eqTa xel ovnuri gazrdis (nxg) special izebul i qvedanayofi, romel sac daeval a nal eqTa xel ovnuri gazrdis mizniT sacdel - sawarmoo samuSaoebis Catareba sionis wyal sacavis auzSi. 2 radiol okaciuri sadguriT aRWurvil i am razmis sakomando punqti imyofeboda gorSevirdenis serze TianeTis raionSi da 1990 wl amde atarebda zemoqmedebis operaciebs hidrometeorol ogiis institutis samecnieromeToduri xel mZRvanel obis qveS. razmis Semadgenl obaSi Sedioda 5 sacecxl e wertil i da samoqmedo teritoria Seadgenda 100 aTas ha-s. sakomando punqts emsaxureboda aerosinoptikuri jgufi, punqti uzrunvel yofil i iyo saTanado sayofacxovrebo pirobebiT.

gasamxedroebul samsaxurSi saTanado yuradReba eqceoda axal i kadrebis momzadebas. 1970-iani wl ebis meore naxevarSi Tel avis i.gogebaSvil is sax. pedagogiuri institutis saswavl o programaSi Setanil iqna setyvasTan brZol is praqtikasTan dakavSirebul i sagnebis swavl eba (zogadi meteorol ogia, Rrubel Ta fizika, aqtiuri zemoqmedebis safuZvl ebi, sinoptikuri meteorol ogia da sxva), rac uzrunvel yofda setyvasTan brZol is samsaxuristvis regionis mosaxl eobidan saSual o rgol is special istTa momzadebas.

1991 wl idan Sewyda setyvasTan brZol is samuSaoTa dafinanseba, moiSal a misi organizaciul i struqtura da ganiavda misi material ur-teqnikuri baza. amJamad SemorCenil ia sakomando punqtebis cal keul i el ementebi ruispirsa da badiaurSi.

3. kaxeTis regionSi setyvasTan brZol is gamoyenebuli i teqno logia

1960 wl idan kaxeTSi setyvasTan brZol is praqtikul gamocdil ebaze dayrdnobiT, agreTve sabWoTa kavSirs da ucxoETis qveynebsi warmoebul samuSaoebSi dagrovil i

codnis gaTval iswinebiT, 1980-iani wl ebisTvis setyvasTan brZol is gasamxedroebul samsaxurSi setyvasTan brZol is teqnoI iogia moicavda Semdegi ZiriTad el ementebS:

1. aerosinoptikuri situaciis gaTval iswinebiT sako-mando punqtidan wriul i radiol okaciuri (r/l) mimoxil vis periodul ad Catareba. mimoxil vis radiusi, Cveul ebriv, $R=100$ km Seadgenda da tardeboda mrl sadguris $\lambda=3.2$ sm tal Ris sigrZis diapazonSi. imis gaTval iswinebiT, rom kaxeTis regionSi setyvasaSiSi Rrubl ebis gadaadgil ebis siCqare saSual od $30\text{km}/\text{sT}$ Seadgens, dakvirvebis es radiusi sakmaris dros iZl eoda dasacavi teritoriidan sakmaod daSorebul i Rrubl ebis (koveqciuri uj redebis) an maTi sistemebis aRmosaCenad da maTze zemoqmedebisTvis mosamzadebl ad. miRebul i informaciis dasazustebl ad mimoxil vebi tardeboda $R=300$ da 50 km radiusebSi. interval ebi mimoxil vebS Soris SeirCeoda aerosinoptikuri situaciis gaTval iswinebiT da, rogorc wesi, 1 sT ar aRemateboda.

2. r/l dakvirvebis radiusSi ($R=100$ km) mZl avri konveqciuri Rrubl ebis (Cu cong. Cb) radioeqos aRmoCenias dakvirvebebi uwyvet rejimze gadadioda, izomeboda da dakvirvebis Jurnal Si fiqsirdeboda maTi parametrebi: Rrubl is simaRl e, maqsimal uri amrekl adobis azimuti da manZil i, gazrdil i amrekl adobis zonis (gaz) geometriული zomebi (sigrZe/sigane, diametri, zeda da qveda sazRvris simaRl eebi), maqsimal uri r/l amrekl adoba. gaz aRniSnavda Rrubl is im mocul obas, roml is r/l amrekl adoba erTi rigiT nakl ebi iyo Rrubl is maqsimal ur amrekl adobaze. am monacemebiT ganisazRvreboda Rrubl is (an maTi sistemis) moZraobis siCqare da setyvasaSiS-roeba.

3. aRmoCenil i konveqciuri Rrubl ebis setyvasaSiS stadiaSi gadazrdisa da dasacavi teritoriisken moZraobis dadgenis SemTxvevaSi sahaero moZraobis marTvis centrSi gadaecemoda nebarTvis moTxovna sahaero sivr-cis aviaciisTvis gadasaketad samoqmedo teritoriisa da zemoqmedebis xangrZl ivobis savaraulo miTiTebiT. moT-

xovna unda gadacemul iyo saTanado winwaswrebiT (daaxl oebiT 1 saaTiT adre), raTa am droSi moswrebul iyo frenebSi saTanado koreqtivebis Setana. aRsaniSnavia, rom sbgs praqtikaSi yofil a SemTxvevebi, rodesac sxvadsxva mizezebiT nebarTvis miuRebl obis Sedegad dasacav teritoriaze Semosul a, an mis Tavze ganviTarebul a setyviani Rrubel i da, zemoqmedebis gareSe darCenil s, moucia setyva.

4. zemoqmedebis Casatarebl ad nebarTvis moTxovnis gadacemasTan erTad sacecxl e wertil ebi srul i sabrZoli o mzadyofnisa da uwyveti radiokavSiris reJimSi gada-doda.

5. setyvasaSiSi/setyviani Rrubl is dasacav teritori-asTan miaxl oebisas an mis sazRvrebSi Semosvl isas/mis Tavze ganviTarebisas zemoqmedebis xel mZRvanel is mier gaicemoda brZaneba zemoqmedebis dawyebis Sesaxeb. zemoqmedebis procedura moicavda Semdeg operaciebs:

zemoqmedebis parametrebis gansazRvra setyvasaSiSi Rrubl is/uj redis radiol okaciuri monacemebis safuZvel ze. zemoT dasaxel ebul i monacemebi radiol okatoris ekranze aiTvl eboda da gazrdil i amrekl adobis zonis konturebi xel iT daitaneboda dasacavi teritoriis pl anSetze. (setyvasaSiSi Rrubl is moaxl oebisas r/l dakvirvebebi $\lambda=10$ sm tal Ris sigrZis diapazonSi gadadi-oda). paral el urad, gazrdil i r/l amrekl adobis zonis, misi geometriul i zomebis da maqsimal uri amrekl adobis mixedviT special uri cxril is mixedviT ganisazRvreboda Rrubl is setyvasaSiSroeba da masze erTjeradi zemoqme-debis Casatarebl ad saWiro raketebis raodenoba.

gaz konturebisa da maqsimal uri r/l amrekl adobis aris pl anSetze datanis Semdeg special uri SimSis dax-marebiT SeirCeoda zemoqmedebis Casatarebl ad optimal u-rad ganl agebul i sacecxl e wertil i/wertil ebi da gaic-emoda brZaneba aqedan Sesabamisi tipis (moqmedebis radi-usis, anu erT-Tu orsafexuriani „al aznis“) da raodenob-is raketebis mocemul i azimutiTa da vertikal uri kuTi-xiT gaSvebis Sesaxeb. zemoqmedebaze gaxarj ul i rakete-

bis raodenoba sbgs praqtikaSi did diapazonSi icvl eboda susti setyvasaSiSi Rrubl is sawvimar stadiaSi gadasayvanad zogjer 2-3 raketac ki yofil a sakmarisi, maSin radesac ganviTarebis stadiaSi myofi mraVal uj rediani frontal uri Rrubl is TiToeul uj redze xandaxan 100-ze meti raketac ki gaxarj ul a. gansakuTrebiT mZime viTareba iqmneboda dasacav tiritoriaze erTdroul ad bevri seryvasaSiSi Rrubl is SemoWris/warmoqmniS SemTxvevaSi. am dros zemoqmedebas dasacavi teritoriis sxvadasxva nawil Si/seqtorSi erTdroul ad ramdenime piri xel mZRvanel obda da sacecxle wertil ebs anomal uri datvirTviT uwevdaT muSaoba. Tu zemoqmedebis Sedegad ar SeimCneoda konkretul i uj redis setyvasaSiSroebis Semcireba, zemoqmedebis procedura Sesabamisi dozirebiT unda gameorebul iyo da es grZel deboda manamde, sanam Rrubel i ar daiwyebda Sesustebas an gasvl as dasacavi teritoriis gareT. interval ebi zemoqmedebis gameorebas Soris SeirCeoda zemoqmedebis xel mZRvanel is mier radiol okaciuri parametrebis cvl il ebis trendisa da Seqmnil i situaciis mixedviT.

6. zemoqmedebis Catarebis procesSi uwyvetad grZel deboda r/l dakvirvebebi rogorc zemoqmedebaqmnil, aseve axal konveqciur uj redebze, roml ebiC uaxl ovdeboda dasacav teritorias, an warmoiqmneboda mis Tavze. dakvirvebebi wydeboda mxol od maSin, rodesac Rrubl ebi wamyvani nakadis mimarTul ebiT stovebda dasacav teritorias da mis SemogarenSi $R=100$ km radiusiT aRar daikvirveboda konveqciis axal i kerebis gaCena. amave dros ixsneboda nebarTvis moTxovna sahaero moZraobis marTvis centridan.

7. dasacav teritoriaze Rrubl is setyvasaSiS stadiaSi didi xniT (12 sT) yofnis SemTxvevaSi an setyvis mosvl is Sesaxeb informaciis miRebisas savaraudod dasetyvil teritoriaze igzavneboda special istTa jgufi SesaZlo zaral is (farTobi, dazianebis xarisxi) dasadgenad.

8. konkretul i samuSao dRis ganmavl obaSi Catarebul i zemoqmedebis operaciebis Sesaxeb dgeboda srul i dokumentacia, romel ic moicavda Semdeg informacias:

- gasamxedroebul nawil Si am dRes morige Semadgenl obis srul i sia;
- informacia gasul i dRis aerosinoptikuri situaciisa da samuSao dRis amindis prognozis Sesaxeb;
- dRis ganmavl obaSi Catarebul i r/l dakvirvebebis srul i cxril i cal keul i uj redebis/Rrubl ebis r/l parametrebis droSi cvl il ebis miTiTebiT;
- TiToeul uj redze Catarebul i zemoqmedebis srul i aRweril oba gaxarjul i raketebis tipisa da raodenobis miTiTebiT, dasacavi teritoriis rukaze/pl anSetze maTi gaz da maqsimal uri amrekl adobis aris traqtoriis CvnebiT;
- samuSao dRis srul i angariSi zemoT CamoTvl il i dokumentaciis anal iziTa da jamuri Sedegebis CvnebiT, agreTve dRis ganmavl obaSi morige Semadgenl obis saqmianobasTan dakavSirebul i faqtorebis aRweriT (Serferxebebi radiol okatorebis, zemoqmedebis teqnika da kavSirgabmul obis muSaobaSi, zemoqmedebis nebarTvis miRebaSi, zemoqmedebis dagvianeba, raketebis maragis amowurva sacecxl e wertil ebze da sxv.).

samuSao dRis angariSebi aRniSnul i formiT dgeboda yvel a gasamxedroebul nawil Si, sezonis dasrul ebis Semdeg ikribeboda ruispiris central ur bazaze da maT safuZvel ze xdeboda sbgs Catarebul i zemoqmedebis operaciebis srul i wl iuri angariSis Sedgena.

miixedavad imisa, rom 1980-iani wl ebisTvis ucxoetis ganvitarebul qveynebsi kompiuterul i teqnikis gamoyenebiT ukve avtomatizebul i iyo Rrubl ebze r/l dakvirvebis Sedegad miRebul i informaciis safuZvel ze zemoqmedebis parametrebis dadgena, sabWoTa kavSirSi es midgoma jer ar iyo danergil i. amitom setyvasTan brZolis teqnologi ogia moicavda monacemebis xel iT damuSavebis procedurebs, rac sagrZnobl ad arTul ebda da anel ebda zemoqmedebis Catarebas. es ki atmosferoSi swrafad mimdi-

nare procesebis dros xSirad amcirebda zemoqmedebis efeqturobas.

setyvasaSiSi Rrubl is operatiul i model isa da kompiuterul i teqnikiis uqonl obis gamo setyvasaSiSi Rrubl ebis mosal odnel i ganviTarebis prognozi dgeboda kaxeTis regionisagan moSorebiT (Tbil isSi). Catarebul i radiozondirebis monacemebis gamoyenebiT, Cveul ebriv emagramaze atmosferos Termul i aramdgradobis pirobebis gaTvl is gziT. es garemoeba ar iZl eoda regionSi mZl avri konveqciis ganviTarebis pirobebis real uri Sefasebis SesaZl ebl obas. garda amisa, saimedo model uri gamoTvl ebis Sedegebis uqonl oba SeuZl ebel s xdida radiolokaciur monacemTa saSual ebiT zemoqmedebis efeqtis sarwmuno doneze dadgenas. amasTan erTad, dasacavi teritoria ar iyo aRWurvil i nal eqmzomi xel sawyoebis adeqvaturi qsel iT.

zemoqmedebis efeqturobis dadgenas arTul ebda agreTve msgavs fizikur-geografiul pirobebsi myofi sakontrol o teritoriis ararseboba, amitom efeqturobis kontrol isaTvis ZiriTadad gamoiyeneboda setyvasTan brZol is samuSaoTa dawyebamde arsebul i mosavl is saxel mwifo dazRvevis monacemebi da iSviaTad Rrubl ebze r/l dakvirvebis masal ebi. es monacemebi sezonis dasruli ebis Semdeg safuZvl ad edeboda Catarebul samuSaoTa ekonomikuri efeqturobis j amur Sefasebas, ristvisac sezonze gaweul i saerTo xarj ebi dardeboda setyvisgan hipoteturad gadarCenil mosavl is Rirebul ebas.

sacecxl e wertil ebze sakomando punqtidan miRebul i brZanebebis Sesrul eba warmoebda xel iT, rac gansakuTreb iT Ramis saaTebSi da intensiuri muSaobis pirobebsi, Secdomis did al baTobas Seicavda. 80-ian wl ebSi iyo mcdel oba raketebis gamSvebi danadgarebis sakomando punqtidan avtomatur marTvaze gadayvanisa, Tumca teqnikiuri mizezebis gamo es proeqti ver ganxorciel da.

kompiuterul i teqnikiis uqonl obis gamo zemoqmedebis masal ebis arqivireba qaRal dze warmoebda da es monacemebi geofizikis institutSi inaxeboda. monacemTa anal i-

zi da ganzogadeba periodul ad tardeboda geofizikis institutis TanamSromel Ta mier.

4. setyvasTan brZol is samuSaeobi bul gareTSi

saxel mwifo politikis rangSi ayvani i setyvasTan brZol is samuSaeobi bul gareTSi daiwyo 1968 wel s, rodesac pl ovdavis raionSi gaixsna setyvasTan brZol is pirveli qvedanayofi. 2001 wl amde setyvasTan sabrZol vel ad gamoiyeneboda rusuli warmoebis raketebi "pgim", "obl ako", "al azani"-1 da "al azani"-2. 1994 wl idan daiwyo agreTve "al aznis" modificirebuli raketebis gamoyeneba, roml ebic aRWurvil ia iodovani vercxli is (AgI) Semcveli reagentiT.

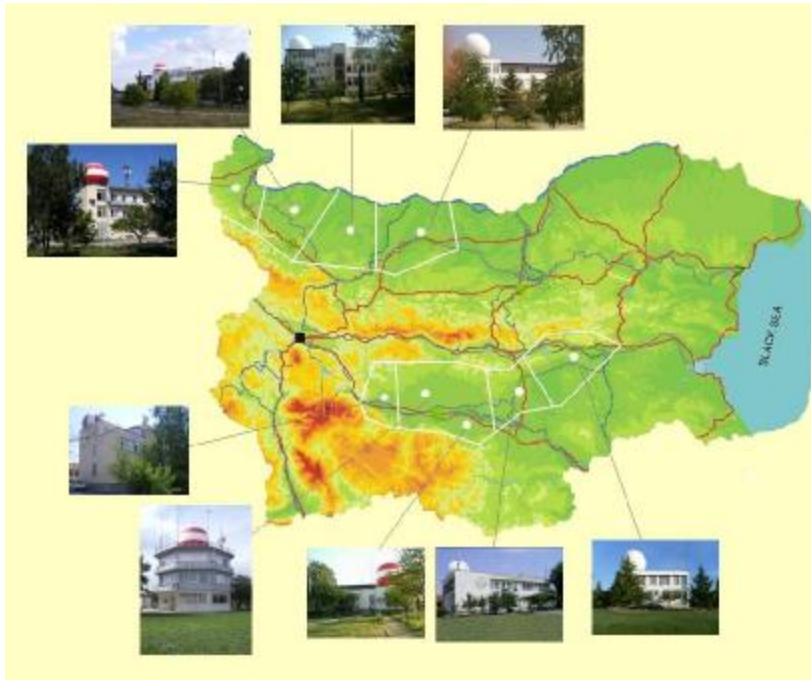
amJamad Rrubl ebze zemoqmedeba warmoebs 9 sakomando punqtidan. dasacavi teritoriis farTobi Seadgens 17257 kv.km anu 1ml n 725.7 aTas ha-s da igi moicavs 4 raions dunais vakeze da 4 raions Trakiis dabl obze.

4.1. setyvasTan brZol is samsaxuris struqtura

setyvasTan brZol is sakomando punqtebis ganl ageba bul gareTis teritoriaze da maTi saerTo xedebi moyvani- lia nax.5-ze. saTanado masStabis gamoyenebiT am naxazidan miReba, rom saSual o manZil i sakomando punqtebs Soris daaxl oebiT tol ia 60km. TiToeul i sakomando punqtis dasacavi teritoria sakmaod farTo diapazonSi icvl eba 150-dan 300 aTas ha-mde da saSual od Seadgens 220 aTas ha-s. sagul isxmoa, rom samxreTiT Trakiis sektorSi erT dasacav teritorias ori sakomando punqti icavs.*

TiToeul i sakomando punqti aRWurvil ia $\lambda=3.2$ da 10 sm tal Ris sigrZeze momuSave ortal Riani dopleris meteorol ogiuri radiol okatoriT, roml ebic gamoiyeneba zemoqmedebis operaciebis Casatarebl ad. amasTan erTad, 3 sakomando punqtze ganTavsebul ia mrl -5 tipis 3 radiol -

- SeniSvna: xazgasmul i daxril i SriftiT mocemul ia teqstis qarTul i versiis Semdgenel Ta komentarebi.




nax.5 bul gareTis setyvashan brZol is samsaxuris dasacavi teritoriebisa da sakomando punqtebis ganl agebis sqema.

okaciuri sadguri (nax.6), roml ebic 150 km radiusSi sistematurad awarmoebs dakvirvebas saRrubl o sistemebze da real ur droSi gadascemen meteorol ogiur informacias amindis movl enebis ganvitarebis Sesaxeb sofiaSi mdebare sainformacio centrs da zemoqmedebis punqtebs (sacecxl e wertil ebs) zemoqmedebis operaciebistvis maTi mzadyofnis uzrunvel sayofad. aRniSnul i informacia Sei cavs monacemebis dakvirvebis radiusSi wwmis zonebis, Rrubel Ta maqsimal uri simaRl isa da radiol okaciuri (r/l) amrekl adobis, Rrubel Ta gadaadgil ebisa da maTi siCqaris Sesaxeb, agreTve raodenobriv monacemebis wwmis

intensivobisa da raodenobis, qarisi mamarTul ebisa da siCqaris Sesaxebe.

Network for transfer of real time radar meteorological information

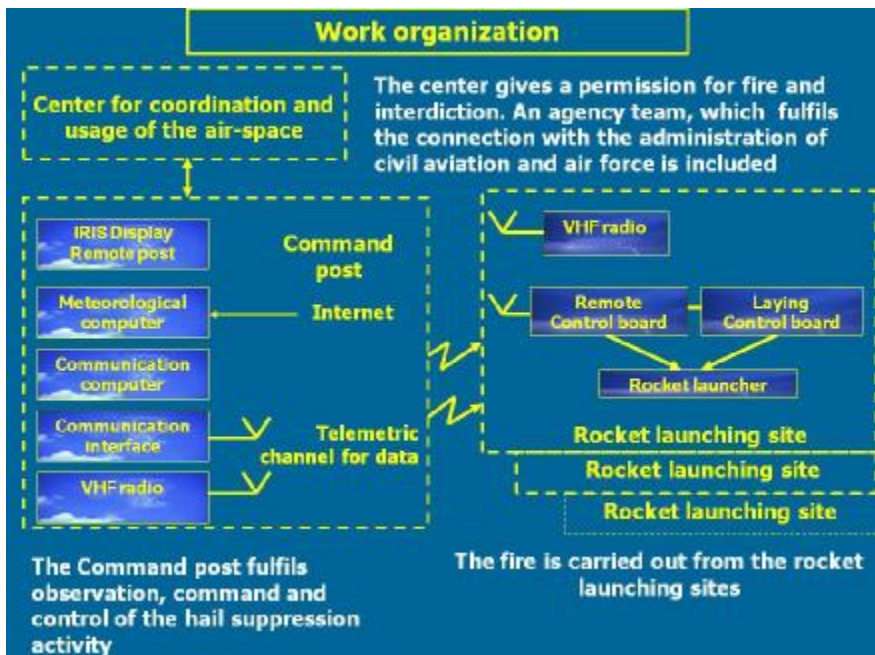
The three radars MRL-5 transfer real time radar data to informative center-Sofia and to remote posts IRIS Display, where hail suppression operations carry out.



nax.6 meteorol ogiuri informaciis mimRebi mrl -5 radi-ol okatorebis ganl ageba dasacav teritoriaze.

4.2.samuSaoTa organizacia

bul gareTis setyvasTan brZol is samsaxuris organizaciul i struqtura naCvenebia nax.7-ze. moyvanil i sqemis marcxena nawil Si pirvel /zeda adgil ze ganTavsebul ia sahaero moZraobis marTvis centri, romel ic uzrunvel-yofs samoqal aqo da samxedro aviaciisgan sahaero sivr-cis gaxsnas zemoqmedebis operaciebis Casatarebl ad. misi



nax.7 bul gareTis setyvasTan brZol is samsaxuris organi-
zaciul i struqtura

nebarTvis gareSe zemoqmedeba Rrubl ebze akrZal ul ia.
sahaero moZraobis marTvis centris qveS ganTavsebul ia
sakomando punqtis bl oki, romel ic Seicavs wriul i mimo-
xil visa da zemoqmedebis operaciebis samarTav radiol-
okatorebs, internetTan dakavSirebul Sesabamis meteor-
ol ogiur kompiuters, sakomunikacio kompiuters, radio-
kavSirisa da kavSirgabmul obis sxva saSual ebeps. sako-
mando punqtidan warmoebis dakvirvebebi saRrubl o siste-
mebze, setyvasaSiSi Rrubl ebis SerCeva, maTze zemoqmede-
bis xel mZRvanel oba da zemoqmedebis operaciebis kont-
rol i. am programiT momuSave TiToeul i sakomando pun-
qti mWidro kavSirSi imyofeba danarCen sakomando pun-
qtebTan, agreTve maT dasacav teritoriaze masze mimagre-
bul sacecxl e wertil ebTan, roml ebic gaertianebul ia
sqemis marj vena nawil Si moTavsebul bl okSi. radiol ok-

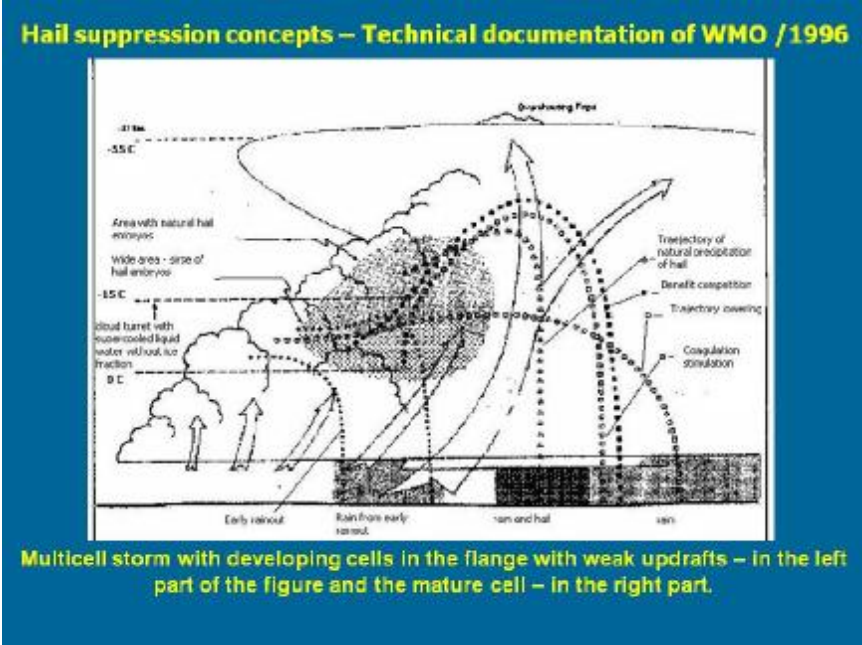
aciuri informaciis safuZvel ze sakomando pунqtze gamo-
muSavebul i brZanebis Sesabamisad am wertil ebidan war-
moebS raketebis gaSveba.

4.3.setyvasTan brZol is koncefcia

bul gareTSi setyvasTan brZol is samuSaoebi eyrdno-
ba zemoqmedebis Sedegad setyvasaSiS Rrubel Si setyvis
warmomSobi makonkurirebel i birTvebis koncentraciis
xel ovnuri gazrdis koncefcias, ramac unda uzrunvel -
yos ganviTarebis adreul fazaSi myofi Rrubl is ga-
dazrda sawimian stadiaSi, an setyvis marcvl ebis zrda
mcire zomebamde. am miznis misaRwevad Rrubl is gadamet-
civebul i nawil is minus 10°C-dan minus 20°C-mde gazrdi-
l i r/l amrekl adobis areSi Setanil i unda iqnas sakma-
risi raodenobis makristal ebel i reagenti, romel ic ga-
moiwvevs mcire weTebis gayinvaz da maT konkurencias
Rrubel Si arsebul i wyl is orTql is misaTvisibl ad. Se-
degad warmoqmnil i setyvis mraval ricxovani mcire nawi-
l akebi Rrubl idan vardnias aswreben gadnobas da miwam-
de aRweven wimis weTebis saxiT

es koncefcia samarTI iania im SemTxvevaSi, Tu Rru-
bel Si Setanil i reagentis raodenoba sakmarisia Rru-
bel Si arsebul i gadametcivebul i mcire weTebis dasak-
ristal ebl ad. Tuki Rrubl is gadametcivebul areSi uk-
ve arsebobs didi raodenobiT setyvis marcvl ebi an
msxvil i weTebi, maSin Setanil reagents SeuZl ia mxo-
l od maTi Semdgomi zrdis Seferxeba da ara setyvis mos-
vl is Tavidan acil eba. koncefcia samarTI iania agreTve
im SemTxvevaSi, rodesac Rrubel Si wyl is orTql is miwo-
deba l imitirebul ia, rac ganapirobebs xel ovnurad war-
moqmnil birTvebs Soris konkurencias. Tumca, Tu Rrube-
l i viTardeba iseT pirobebSi, rodesac wyl is orTql is
miwodeba praqtikul ad SeuzRudavia (mag. mZl avri fron-
tal uri procesebis dros), maSin konkurenciis meqanizmi
kargavs azrs da setyvis warmoSobis procesi SeiZl eba
umar Tavad mi mdi nareobdes.

setyvasiSi Rrubl is model ad SerCeul iqna msot-
 lio meteorol ogiuri organizaciis (WMO) mier 1996
 wel s SemoTavazebul i setyvis mraval uj rediani Rrubl
 is sqema (nax.8), roml is zeda sazRvari e.w. "grdeml is"
 saxiT SeiZl eba aRwevdes 17km simaRl es -55°C temperatu-
 raze. Rrubl is marj vena nawil Si gamosaxul ia mZl avri



nax.8. setyvis mraval uj rediani Rrubl is sqema.

aRmaval i nakadebiT mkvebavi Rrubl is simwifis stadiaSi
 myofi uj redi, romel ic iZl eba wimasa da setyvas. Rrubl
 is gamuqebul i are Seesabameba gazrdil i amrekl adobis
 aris mdebareobas, sadac Tavmoyril ia Rrubel Si arsebul
 i, samive fazaSi myofi wyl is umetesi nawil i da romel
 Siac warmoebis wimis wveTebisa da setyvis marcvl e-
 bis zrda. Rrubl is marcxena nawil Si warmoebis haeris Se-
 darebiT susti aRmaval i nakadebiT mkvebavi axal i uj re-
 debis warmoqmna, roml ebic Sesiferisi aerosinoptikuri
 pirobebis arsebobis SemTxvevaSi SeiZl eba gaZl ierdes da

SemdgomSi miaRwios agreTve simwifis stadias. sqemaze gamosaxul i Rrubel i, rogorc wesi, viTardeba moZravi atmosferul i frontis pirobebSi. axal i uj redebis Casaxva xdeba frontTan erTad moZravi Rrubl is wina nawil Si, xol o wwmisa da setyvis gamoyofa- mis Sua da ukana nawil Si. konveqciis ganviTarebisTvis gansakuTrebit xel Semwyobi pirobebis arsebobisas SesaZl ebel ia moxcdes ramdenime mraVal uj rediani Rrubl is Serwyma, ris Sedegadac warmoiqmneba e.w. superuj rediani Rrubel i. am tipis Rrubl is horizontal uri zomebi Cveul ebriv ramdenime aTeul km-s aRwevs da arsebobis xangrZl ivoba -ramdenime saatS. zemoqmedeba aseT Rrubel ze Zal ze garTul ebul ia misi didi zomebis, masSi Tavmoyrili wyl is maragisa da metad mZl avri aRmaVal i nakadebis arsebobis gamo, roml ebsac SeuZl ia Rrubel Si Setanil i reagentis swrafi gatana Rrubl is grdeml Si da mis gareTise, rom igi ver aswebs urTierTqmedebas gazrdil i amrekl adobis areSi arsebul nawil akebtan.

4.4. atmosferul i pirobebis aerosinoptikuri anal izi

Rrubel Ta ganviTarebis pirobebis dasadgenad da maTi prognozirebisaTvis saWi ro aerosinoptikuri monacemebi moicavs miwispira amindis da aerosinoptikur rukebs 850, 700 da 500 heqtopaskal (hpa) bariul simaRl eebze, saprognoz model ebs, meteogramებს da meteorol ogiuri Tanamgzavrebidan miRebul satel itur informacias.

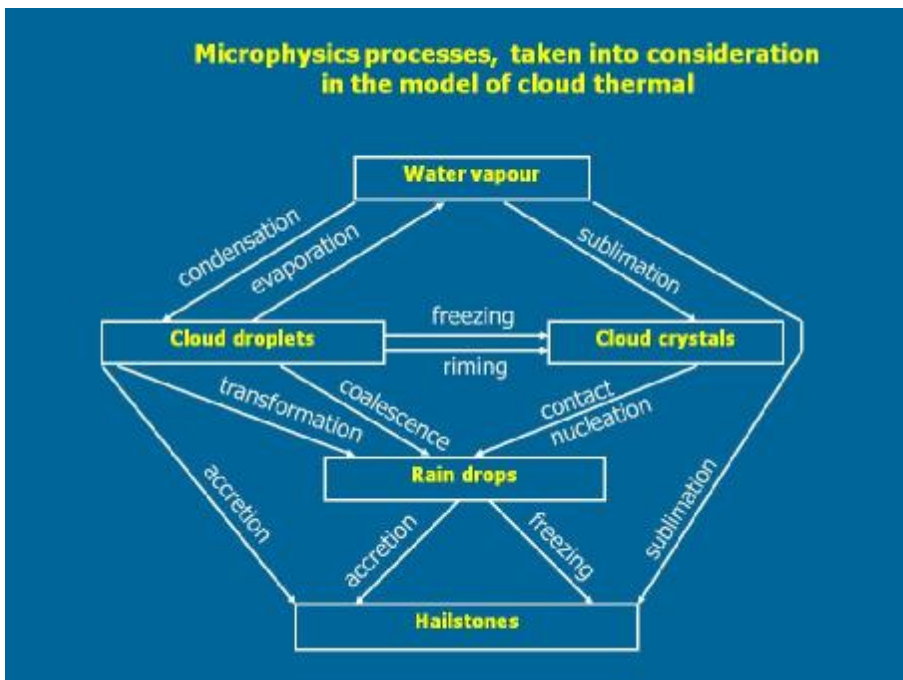
atmosferos fizikuri mdgomareobis anal izisaTvis gamoiyeneba aerol ogiuri zondirebis monacemebi, romel - Ta safuZvel ze aigeba konveqciuri Rrubl is erTganzomil ebiani model i.

4.5. konveqciuri Rrubl is erTganzomil ebiani model i mikrofizikis parametrizaciit

atmosferos mocemul i stratifikaciis pirobebSi konveqciuri Rrubl is ganviTarebisa da misgan miRebul i nali eqis prognozirebisTvis gamoyenebul ia sofias universitetSi damuSavebul i Rrubl is erTganzomil ebiani model i. igi eyrdnoba Semdeg ZiriTad principebs:

- Rrubel Si mimdinare mikrofizikuri da dinamikuri procesebi urTierTdamoki debul ia;
- model Si mikrofizikuri procesebis parametrizaciis bl oki ganxil avs wyl is Semcvel obis 5 kl ass (wyl is orTql i, Rrubel Si arsebul i wyal i, wima, Rrubel Si arsebul i yinul ovani fraqcia, myari nal eqebi);
- Rrubl is maxasiaTebI ebi simaRI is funqcias war-moadgens;
- nal eqTa tipis (setyva Tu wima) saprognozo kl a-sifikaciis funqciebi miReba safexuriani diskriminantul i anal izis gamoyenebi T.

Rrubel Si mimdinare mikrofizikuri procesebis ganxil ul i sqema mocemul ia nax.9-ze.



nax.9. Rrubel Si mimdinare mikrofizikuri procesebis urTierTkavSi ris sqema.

sqemis mixedviT aRmaVal i nakadebi dan da weTeBis aorTql ebis Sedegad miRebul i wyl is orTql i ixarj eba kondensaci asa da subl imaci aze. kondensaci is Sedegad miRebul i Rrubl is weTeBi ganicdian koagul acias da warmoqm nian wimis weTeBs, xol o subl imaci isa da Rrubl is weTeBis gayinvis Sedegad warmoqm nil i Rrubl is kristal ebi sakontaqto nukl eaci is gziT agreTve warmoqm nian wimis weTeBs. am weTeBis koagul aci isa da gayinvis Sedegad miReba setyvis marcvl ebi, roml ebzedac damatebiT kidev xdeba Rrubl is weTeBis dal eqva (akrecia) da wyl is orTql is subl imacia.

gamoTvl ebis Casatarebl ad sawyis pirobebad miCneva:

- Rrubl is warmomqm nel i sabaziso el ementis, Termikis radiusi Rrubl is fuZis doneze $R_0=5\text{km}$, xol o misi sawyisi aRmaVal i siCqare $W_0=5\text{m/wm}$.
- gamoTvl ebSi gamoyenebul i mudmivebis, sawyisi da zRvrul i sidi deebis mniSvnel obebi miRebul ia eqsperimentul i gamokvl evebis Sedegad.

model is Semaval i monacemebi:

- atmosferos radiozondirebis /aerol ogiuri zondirebis monacemebi;
- miwispiril i meteorol ogiuri monacemebi temperatura da fardobiTi sinotive, dRis maqsimal uri temperatura;
- setyvasaSiSi Rrubl is tipi: frontal uri (konvergenციული) an Sidamasiuri, gansazRvrul i sinoptikuri anal izis safuZvel ze.

model uri gamoTvl ebis Sedegad miReba Rrubl is Semdegi maxasiaTebl ebi:

- Sesabamis simaRl eze temperaturis sxvaoba Rrubl is SigniT da mis gareT;
- Sesabamis simaRl eze aRmaVal i nakadis maqsimal uri siCqare;
- Sesabamis simaRl esa da temperaturaze Rrubl is maqsimal uri ianoba;

- Sesabamis simaRI esa da temperaturaze Rrubl is maqsimal uri yinul ianoba;
- fenebis sisqe aRmaval i nakadebis maqsimal uri siCqareebi T 20, 25, 30m/wm;
- Rrubl is Sida temperaturis vertikal uri ganawil eba, rac saWiroa Rrubel Si Setanil i reagentis difuziis gamosaTvl el ad;
- mosul i nal eqis prognozirebul i kategoria (setyva Tu wvima).

4.6. Rrubel Si reagentis gavrcelebis modeli.

zemoqmedebis procesSi reagentis optimal uri dozi-
rebis mizniT damusavda reagentis difuziis modeli, romel ic eyrdnoba Semdeg ZiriTad principebs:

- Rrubel Si reagenti vrcel deba turbul enturi difuziis gziT;
- yinul warmomqmnel i birTvebis yinul is Canasaxebad gardaqmnis procesSi wyarodan garkveul manZil ze warmoiqmneba yinul is Canasaxebis fiqsirebul i koncentracia;
- mcire zomebis gamo reagentis nawil akebi gaitaneba gareT konveqciuri nakadebis mier, roml ebic daikvirveba reagentis Setanis areSi, ris Semdegac xdeba maTi gavrceleba turbul enturi difuziis meqanizmiT.

modelis Semaval i monacemebia:

- raketebis traektoriis aqtiuri nawil i;
- frenis dros generatoris mier yinul warmomqmnel i birTvebis warmomqmnis intensivoba;
- raketis efeqturobis koeficienti;
- Rrubel Si temperaturis vertikal uri ganawil eba;
- aRmaval i nakadi reagentis Setanis areSi;
- reagentis gavrcelebis dro da masStabi;
- yinul warmomqmnel i birTvebis koncentracia difuziuri Rrubl is sazRvarze;
- turbul enturi energiis disipaciis vertikal uri siCqare;

- turbulentiuri energiis disipaciis horizontaluri siqare;
difuziuri modelis gamoyenebit xdeba Semdegi parametrebis gaangariSeba;
- difuziis aris mocul oba yinul warmomqmel i birTvebis mocemul i koncentraciit;
- raketis gaSvebis vertikaluri kutxe sxvadasxva simaRl eze myofi sacecxi e wertil ebistvis.

4.7. setyvasiSi uj redebisa da setyviani Rrubl ebis kategoriebi da maTi gansazRvris kriteriumebi

bul gareTis setyvasTan brZolis samsaxurSi miRebulia setyvasiSi da setyviani Rrubl ebis dayofa xut kategoriad (cxril i 1).

cxril i 1. setyvasiSi da setyviani Rrubl ebis kategoriebi

Categories of hail-dangerous cells and hailstorms. Criteria				
	Zmax dBz	ΔH dBz	Development of cells	Seeding
I	45 ≤ Z ≤ 50	ΔH45 ≥1.5km	Slowly growing, with Zmax 15-25dBZ, reaching slowly Zmax 35-40dBZ, H15dBZ≥H-10°C. Small gradient of radar reflectivity Zmax 45dBz arises at a height ≤H-10°C and grows slowly in height	Continuous observation If ΔH45dBz grows more than 2 km, the cells are seeded
II	40 ≤ Z < 45	ΔH40 ≥3km	Rapidly growing, with Zmax 15-25dBZ, Zmax reaching 35-40dBZ for 1-2 minutes. High gradient of radar reflectivity and growth of the cell in all directions. H15dBZ≥H-20°C	The cells are seeded with the purpose of early rainout
III	45 ≤ Z < 50	ΔH45 ≥2km	High formation of an area with 45dBz H45dBZ≥H-10°C	The cells are seeded when 45dBz shows
IV	50 ≤ Z ≤ 55	ΔH45 ≥3km	Hailstorms	The seeding starts immediately
V	Z ≥ 55	ΔH45 ≥4km	Hailstorms	The seeding starts immediately

pirvel (I) kategorias miekuTvneba SedarebiT susti da nel a ganviTarebadi konveqciuri uj redebi, romel Ta maqsimal uri r/l amrekl adoba Z_{\max} moTavsebul ia 45-dan 50 decibel amde (db) Sual edSi. uj redi nel -nel a izrdeba 15-25db-dan 35-40db-mde. maqsimal uri amrekl ebadoba 45 db-s aRwevs -10°C izoTermis simaRI eze da agrZel ebs simaRI eSi mdored zrdaS. ganviTarebis sawyis stadiaSi uj -redze unda warmoebdes uwyveti r/l dakvirvebebi, xol o Tu 45 db-mde miRweul i gazrdil i amrekl adobis zonis (gaz) vertikal uri simZl avre ΔH_{45} db 1.5 km-dan 2 km-mde miARwevs, saWi roa masze zemoqmedebis Catareba

meore (II) kategoriaSi Sedis swrafad mzardi konveqciuri uj redebi, romel Ta Z_{\max} 15-25db-dan 12 wT-is ganmavlobaSi izrdeba 35-45 db-mde. uj redis 40db-mde miRweul i gaz vertikal uri simZl avre ΔH_{40} db unda aRematebodes 3km-s da misi zomebi unda izrdebodes yvel a mimarTul ebiT. 15 db amrekl adobis zona unda aRwevdes minus 20°C izoTermis simaRI es. aseTi tipis uj redebze zemoqmedeba tardeba wimis mosvl is daCqarebis mizniT. *aRni Snul SemTxvevaSi zemoqmedeba or mizans emsaxureba. pirvel i maTgani iTval iswinebs uj redSi/Rrubel Si haeris daRmaval i nakadebis xel ovnurad Seqmnas, rac Tan sdevs Rrubl idan nal eqis gamoyofas. Seqmnil i daRmaval i nakadi asustebS Rrubl is zrdis ganmapirobebel aRmaval nakads da amiT aferxebS setyvasaSiSi Rrubl is setyvian fazaSi gadasvl as. garda amisa, Rrubl idan SesaZl o setyvis nacvl ad damatebiTi wimis miReba, rogorc wesi, sasikeTod adgeba sasofl o-sameurneo kul turebis zrda-ganviTarebas. amasTan erTad, Tu zemoqmedeba tardeba raime wyal -sacavis wyal Semkrebis fargl ebSi, Rrubl idan miRebul i damatebiTi wima zrdis am wyal sacavis sairigacio da hidroenergetikul potencial s.*

mesame (III) kategoriaSi gaerTianebul ia 45-dan 50 db-mde maqsimal uri amrekl adobis mqone uj redebi, romel Ta 45db amrekl adobis mqone gaz-is vertikal uri simZl avre aRemateba 2km-s da 45 db amrekl adobis mqone are imyofeba -10°C izoTermis simaRI is zeviT. zemoqmedeba aseT uj -

redebze iwyeba maSin, rodesac Z_{max} aWarbebs 45db fargl ebs.

meoTxe (IV) kategoriaSi moqceul ia setyvian stadiaSi gadasul i konveqciuri uj redebi, romel Ta Z_{max} icvl eba 50-55db fargl ebSi. 45 db-mde miRweul i gaz-is vertikal uri simZl avre ΔH 45 db aRemateba 3km-s da maTze dauyovnebl iv unda daiwyos zemoqmedeba.

mexuTe (V) kategoriaSi Sedis 55db-ze maRal i maqsimal uri r/l amrekl adobis mqone uj redebi, romel Ta 45db-iani gaxis vertikal uri simZl avre 4 km aRemateba. aseTi uj redebi, umeteswil ad ukve Seicavs setyvis marcvl ebs da maTze aseve dauyovnebl iv unda daiwyos zemoqmedeba.

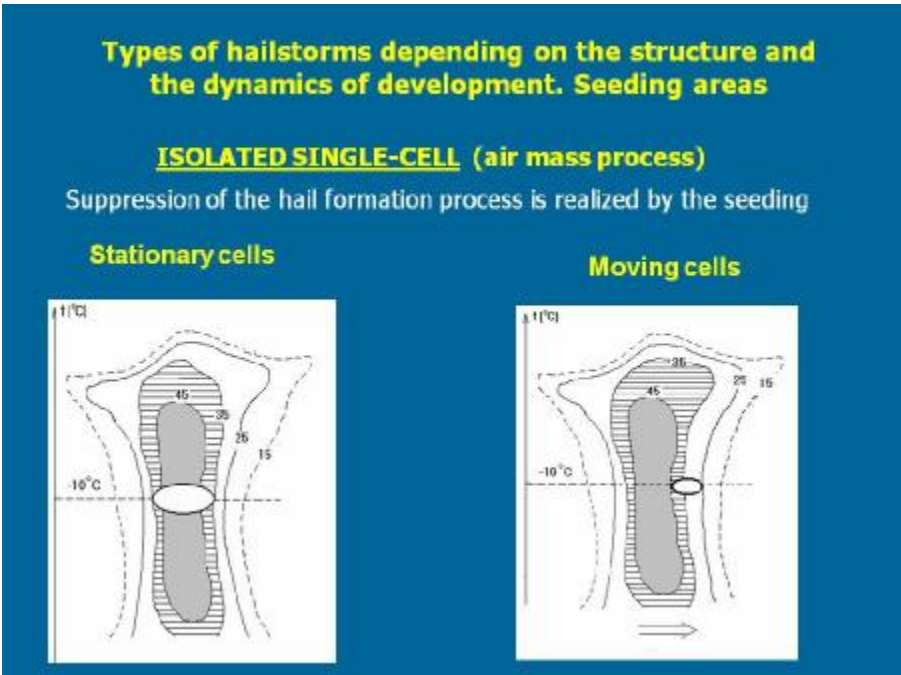
setyvasTan brZol is samsaxuris gamarTul i muSaobis pirobebSi bol o ori kategoriis setyviani Rrubl ebi, rogorc wesi, dasacav teritoriaze mis fargl ebs gare-dan unda Semodiodes da maTze zemoqmedeba mi znad isax-avs setyvis marcvl ebis raodenobisa da zomebis Semdgo-mi zrdis pirobebis minimumamde dayvanas.

4.8.zemoqmedebis strategia

setyvasaSiS Rrubl ebze zemoqmedebis strategia eyrdnoba or ZiriTad prinsips:

- I. zemoqmedebisas reagenti Setanil i unda iqnas im are-ebSi, sadac Tavmoyril ia gadametcivebul i wyl is di-di raodenoba da sustia aRmaVal i nakadi. yinul warmomqmel i birtvebis Setana Rrubl ebSi unda warmoebdes regul arul i interval ebiT uwyvetad, uj redis/Rrubl is setyvasaSiS stadiaSi yofnis mTel i periodis ganmavl obaSi.
- II. reagentis gafrqvevis momentidan nawil akebis makonkurrebel i zomebis miRwevamde saWi roa daaxl oebiT 3 wuTi. amitom reagentis Setanis done unda iyos SerCeul i imgvarad, rom difuziuri Rrubl is horizontal urma kveTam miaRwios -10°C izoTermis dones im dros, rodesac nawil akebis zomebi miaRweven makonkurrebel zomebs.

* izol irebul i erTuj rediani (Sidamasiuri) Rrubl ebi
 muSavdeba 2 sqemiT (nax. 10). umozraod ganviTarebadi Rrubl is/uj redis SemTxvevaSi (A) reagenti SehyavT gazrdil i amrekl adobis zonis (45 db) Sua nawil Si -10°C izoTermis doneze; moZravi uj redis SemTxvevaSi (B) reagentis Setana unda moxdes igive doneze gaz-is moZraobis mimarT frontal ur nawil Si, raTa uzrunvel yofil iqnas difuziuri Rrubl is srul i Secvl a gaz-Si.



A

B

nax.10 erTuj rediani konveqciuri Rrubl is damuSavebis sqemebi: (A) uZravi, (B) moZravi

* mraval uj rediani Rrubl is SemTxvevaSi (nax.11) zemoqmedebis, anu Rrubl is damuSavebis mi zans Seadgens mi-si ganviTarebis stabil urobis darRveva Rrubl is frontal ur nawil Si mzardi, e.w."Svil obil i" uj redebidan wimis gamowveiT, rac xel s SeuSl is simwifis stadiaSi

myof uj redSi setyvis formirebas. iseve, rogorc wina SemTxvevebSi, reagentis Setana unda moxdes -10°C izoTer-mis areSi. naxazis marcxena suraTze, anal ogiurad nax.4-ze mocemul i sqemisa, axal i mzardi uj redebi viTardeba marcxniv moZravi Rrubl is wina nawil Si, e.w. grdeml is qveS, xol o marj vena suraTze aRbeWdil ia radiol okatoris ekranidan gadaRebul i mraval uj rediani Rrubl is vertikal uri Wril i, sadac kargad Cans marcxnidan mar-jvniv moZravi Rrubl is ukana mxareSi muqi momwifebis uj redi da wina nawil Si ganviTarebadi, SedarebiT nak-l ebi amrekl adobis mqone baci uj redebi. naxazis Sua nawil Si mocemul ia radiol okatoris wriul i mimoxil vis indikatoridan (ekranidan) miRebul i Sesabami si suraTi.

MULTI-CELL STORM (front or convergence)

The purpose is to disturb the process stability by early rainout of daughter cells and suppressing the hail formation process in the mature cell

nax.11. mraval uj rediani konveqciuri Rrubl is damuSave-bis sqema

* zemZl avr konveqciur, e.w. superuj redian Rrubel ze (nax.12) zemoqmedeba mi znad i saxavs mi si kveazistacionaru-

ლიმდგომარეობის დარღვევას რუბლის ფრონტურ ნაწილში. Si.e.w. "xorTumis" ღვეს განვითარების სტადიაში მოყოფილი ურედების რეგენტის სეტანით, რამაც უნდა შეაჩეროს სეტის აქსილის განახლების პროცესი.

SUPERCELL STORM (front or convergence)

The purpose is to disturb the quasi-steady state by disturbing the bounded weak-echo region (BWER) and interrupting the process of renewal

The image displays a meteorological software interface. The main window shows a radar map with a color scale from blue (low reflectivity) to red (high reflectivity). A smaller window on the left shows a schematic diagram of a supercell storm structure. The bottom right window shows a data table with the following values:

Value	Unit	Height	Unit
35.0	dBZ	42.1	km
45.4	dBZ	42.8	km
25.3	dBZ	43.0	km
5.0	km	5.7	km
22.2	km		
57.9	km		

ნახ.12. სუპერუჯ რედის კონვექციური რუბლის დამუშავების სქემა

ნახავის მარცხენა ნაწილში სქემურად ასახული სუპერუჯ რედის რუბელის რეგენტის სეტანას მოზარობის მიმართული ებით მისი უკანა ნაწილში აზრი არა აქვს, რადგან იგი გამოირეცხება რუბლიდან გამოყოფილი ნალექებით, ხოლო მისი ნაწილში სეტანის რეგენტი, ჰერის მზლი ავრი არმავალი ნაკადებით, მისიერად ათანის იკნება რუბლის გრძელში და გადანის იკნება ტავისუფალ ატმოსფეროში. ნახავის ღვედა მისი ნაწილში გამოსახულია რადიოლოკატორის ეკრანიდან მიღებული სუპერუჯ რედის რუბლის ვერტიკალიური წრილი, რომელზედაც კვირით არის ნიშნული რეგენტის სეტანის არე. სქემაზე ნაკვები რუბლის აგან განსხვავებით ოკატორის

ekranze asaxul i Rrubel i mopirispire mimarTul ebiT, marcxnidan marjvni v moZraobs. superuj rediani Rrubl ebi, rogorc wesi, frontal uri konvergenciis pirobebSi viTardeba. saqarTvel oSi superuj rediani Rrubl ebis horizontal uri zomebi, Cveul ebriv, orjer da metad aRemateba maT vertikal ur simZl avres.

4.9. teqniki saSual ebebi da kompiuterul i uzrunvel yofa

bul gareTis setyvasTan brZol is samsaxurSi zemoqmedebis operaciebis srul i cikl is Casatarebl ad Seqmnil ia radiol okaciuri da aerol ogiuri informaciis real ur droSi analizis sistema, roml is abreviaturaa RAPIRA.

MRL 5 – IRIS meteorol ogiur movl enebze dakvirvebis, maTi monitoringisa da prognozirebis mZl avri qvesistema, romel ic uzrunvel yofs real ur droSi informaciis miRebas;

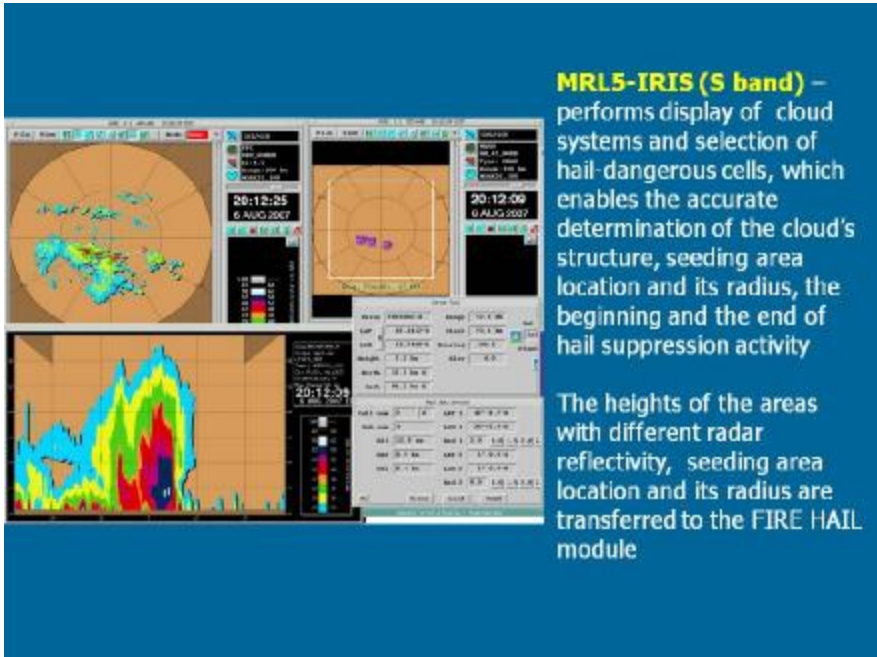
FIRE HAIL kompiuterul i programa Rrubl ebze zemoqmedebisTvis saWiro monacemTa mosamzadebl ad, romel ic gamoi muSavebs zemoqmedebis brZanebebs;

FIRE W sakomunikacio da sainformacio qvesistema setyvis sawinaaRmdego raketebis kontrol isa da gaSvebis special izebul i kompiuterul i programiT.

pirvel i maTgani **MRL 5 IRIS** ($\lambda=10$ sm) qvesistema uzrunvel yofs saRrubl o sistemis displ eize gamosaxul ebis miRebas da setyvasaSiSi uj redebis SerCevas, rac saSual ebas iZl eva dadgenil iqnas Rrubl is struqtura, reagentis Sesatani aris adgil mdebareoba da radiusi, zemoqmedebis proceduris dasawyisi da dasasrul i, agreTve sxvadasxva r/l amrekl adobis areebis simaRl e. es monacemebi gadaecema **FIRE HAIL** qvesistemas (modul s).

MRL 5 – IRIS qvesistemis mier gamomuSavebul sai formacio monacemTa nimuSi moyvanil ia naxazze 13, romel zedac naCvenebia wriul i mimoxil vis indikatorze dafiqsirebul i saRrubl o sistemebi (zemoT) da SerCeul i setyvasaSiSi Rrubl is vertikal uri Wriil i (qvemoT). aqve mocemul ia

radiol okatoriT gazomil i sidiidebis cifrul i amonab-eWdebi .

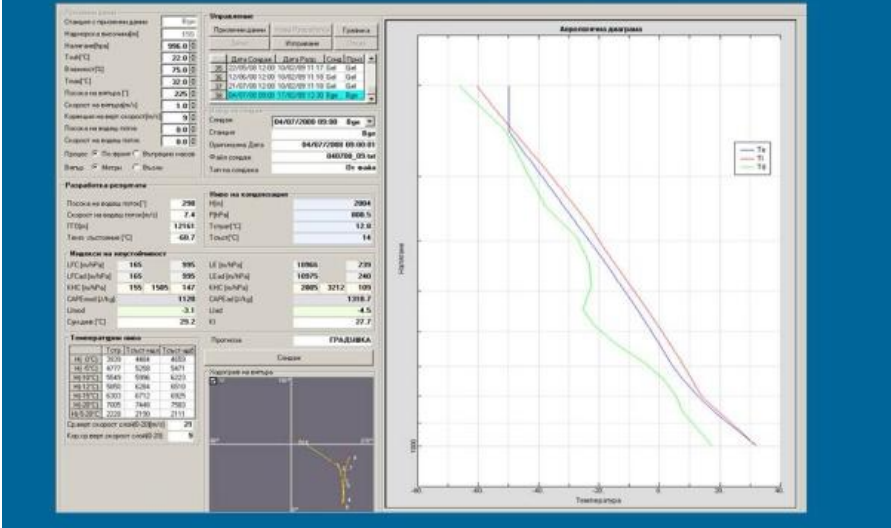


nax.13. MRL5 – IRIS sainformacio qvesistemebis saSual ebiT miRebul monacemTa warmodgenis magal iTi

meore qvesistema **FIRE HAIL** modul i eyrdnoba atmosferos radiozondirebis monacemebs, romel Ta safuZvel - ze xdeba atmosferos Termodinamikuri maxasiaTebl ebis gamoTvl a, Rrubel Ta ganvitarebis pirobebis Sefaseba, mosal odnel i nal eqebis tipis prognozireba da Rrubel - Si Setanil i reagentis gavr cel ebis parametrebis dadgena. atmosferos vertikal uri zondirebis Sedegad miRebul i aerol ogiuri diagramisa da mis safuZvel ze kompiuterul i programis saSual ebiT gamoTvl il i maxasiaTebl ebis cifrul i saxiT warmodgenis magal iTi moyvanil ia nazaze 14.

FIRE Hail Module Aerological sounding

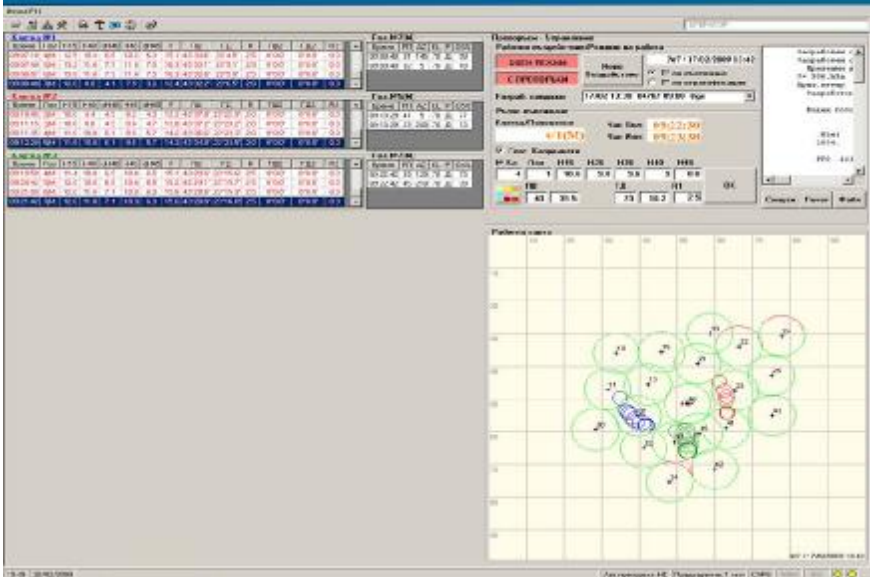
It calculate thermodynamic characteristics of the atmosphere, necessary for analysis of atmospheric conditions and cloud characteristics, forecasting of the type of precipitation and calculating of the diffusion cloud of the agent.



nax.14. FIRE HAIL modul is saSual ebiT gamoTvl il i atmosferos Termodinamikuri maxasiaTebI ebis warmodgenis magal iTi

aRni Snul i monacemebis safuZvel ze, agreTve **MRL 5 – IRIS** qvesistemi dan mi Rebul i konveqciuri Rrubl ebis maxasiaTebI ebis gaTval i swinebiT **FIRE HAIL** kompiuterul i programa gansazRvr avs zemoqmedebis aTvis Sesaferis sa-
 cecxl e wertil ebs, raketebis gamSveb azimuthebSa da vertikal ur kuTxebs, agreTve reagentis Sesatani aris mocul obas. Sesabamisi brZanebebi gadaecema **FIRE W** qvesistemas/modul s. cifrul i formiT warmodgenil i, zemoqmedebis Casatarebl ad sakomando punqtidan gacemul i brZanebebis nimuSi warmodgenil ia naxazze 15. aqve naCvenebia dasacav teritoriaze sacecxl e wertil ebis ganl agebis sqema (pl anSeti), romel zedac muqi wreebiT datanil ia agreTve reagentis Setanis areebi.

Module Recommendation for firing



nax.15. . FIRE HAIL modul is saSual ebiT gamoTvl il i zemoqmedebis Catarebis brZanebebi

naxazidan Cans, rom sakomando punqtidan zemoqmedebis operaciebis Catarebas emsaxureba daaxl oebiT 20 sacecxl e wertil i, rac axl osaa kaxeTis regionSi sacecxl e wertil ebis ganl agebis simWidrovesTan, bul gareTSi 9 sakomando punqtis moqmedebis areSi sacecxl e wertil e-bis saerTo raodenoba daaxl oebiT 180 unda iyos.

FIRE HAIL modul idan miRebul i brZanebebis Se-sabami sad **FIRE W** modul is saSual ebiT Catarebul i zemoqmedebis kompiuterul i formiT warmodgenil i Semaj amebel i dokumentaciis nimuSi moyvanil ia nazaze 16.

FIRE Hail - Module Automatic formation of information about hail suppression operation

The information includes data about every process cell at live time, recommendations and real findings, area of cell track, as well as general information about all the hail suppression operation.

Бърдарски геран

Реализацията: Бонч
Почетен датум: 25.07.2009 20:10:21

Справка за реализирани въздействия
Датум: 05/07/2009 13:30

№ въздействие:	2	Историята:	05/07/2009 13:30	Сектор:	4	История:	05/07/2009 13:30	Въздействията: 13/04/09										
История:	05/07/2009 13:30	05/07/2009 13:30	05/07/2009 13:30	05/07/2009 13:30	05/07/2009 13:30	05/07/2009 13:30	05/07/2009 13:30	05/07/2009 13:30	05/07/2009 13:30	05/07/2009 13:30	05/07/2009 13:30	05/07/2009 13:30	05/07/2009 13:30	05/07/2009 13:30	05/07/2009 13:30	05/07/2009 13:30	05/07/2009 13:30	
<div style="display: flex; justify-content: space-between;"> <div> <p>№ въздействие: 1</p> <p>Обща площ на обработените: 90.0491</p> <p>Обща площ обработена за метеорология: 12</p> <p>Обща площ използвана за метеорология: 1</p> <p>Средна стойност на въздействията: 13 307 209</p> </div> <div style="text-align: right;"> <p>Генератор на въздействията: Селгиз Бърдарски</p> </div> </div>																		

nax.16. sakomando punktubidan Catarebul i zemoqmedebis dokumentacii s nimsi

sakomunikacio da sainformacio qvesistema **FIRE W**, rogorc mrvael funkciuri kompiuterul i programa, uzrunvel yofs Semdegi operaciebis Catarebas:

- * kodirebul i tel emetrul i sistemis saSual eb-iT sakomando punktidan sacecxl e wertil ebze raketebis gaSvebis kontrol i;

- * sakomando punktidan gadacemul i informaciiis saimedobis kontrol i;

- * raketebis gaSvebis brZanebebis zusti da droul i Sesrul ebis kontrol i;

- * sacecxl e wertil ebTan saimedo kavSirisa da raketebis gamSvebi danadgardebis gamarTul i mdgomareobis kontrol i;

* zemoqmedebis Casatarebl ad gacemul i brZanebisa da maTi Sesrul ebis arqivireba;

* sacecxl e wertil ebze raketebis xarj visa da maTi miwodebis raodenobis, TiToeul wertil ze mocemul i momentisaTvis maTi maragis kontrol i;

* meteorol ogiur monacemTa avtomaturi Segrovebisa da damuSavebis SesaZI ebl oba Semdegi el ementebisaTvis: haeris temperatura da sinotive, atmosferul i wneva, qarisiCqare da mimarTul eba, wvimsa da Tovl is jamuri raodenoba, wvims intensivoba.

4.10. sacecxl e wertil is teqniki aRWurvil oba raketebis gasaSvebi punqtis teqniki aRWurvil obis sqema mocemul ia naxazze 17. es aRWurvil oba Sedgeba Semdegi el ementebisagan:



nax.17. raketebis gasaSvebi punqtis teqniki aRWurvil obis sqema

1 - mzis fotoel eqtrul i panel i, romel ic suf-Ta ganaxl ebadi energiit uzrunvel yofs miudgomel adgil as myof daSorebul sacecxl e wertil ebs, sadac ar arsebobs el eqtrul qsel Tan mierTebis SesaZl ebl oba;

2 - fotovol taikuri sistemis sakontrol o panel i, roml is daniSnul ebaa, MPPT teqno logiis gamoyenebiT, mzidan miRebul i el eqtroenergiit akumul atorebis damuxtvis procesis kontrol i, maTi mdgomareobis kontrol i da ganaTebisa da sxva miznebisatvis sacecxl e wertil is el eqtroenergiit uzrunvel yofa;

3 - sacecxl e wertil is gasanaTebi ad gamiznuli i, sinaTl is gamasxivebel i diodebiT (LED) aRWurvil i proJeqtori, romel ic 10-j er nakl eb energias moixmars Cveul ebrivi varvarebis naTurebiT aRWurvil proJeqtorTan SedarebiT;

4 - akumul atorebis batarea, romel ic uwyvetad miawodebs el eqtroenergiias sacecxl e wertil is yvela sistemas;

5 - distanciuri kontrol is panel i, romel ic sakomando punqtTan uzrunvel yofs sainformacio kavSirs sacecxl e wertil ze arsebul i mdgomareobis, raketebis gaSvebisa da am procesis figsirebis Sesaheb kodirebul i tel emetrul i sistemis gamoyenebiT;


6 - raketebis avtomatizebul i gamSvebi danadgari, roml is daniSnul ebaa special uri kompiuterul i programis **FIREW** mier gamomuSavebul i brZanebis SesaZamisad avtomaturad daayenos danadgari azimutebis diapazonSi 0-360⁰ da vertikal uri kuTxebis diapazonSi 45-dan 85⁰-mde da uzrunvel yos 6 raketis rig-rigobiT gaSveba. danadgarSi gaTval iswinebul ia agreTve xel iT marTvis SesaZl ebl oba;

7 – raketebis gamSvebi danadgaris distanciuri kontrol is panel i, romel ic gamoiyeneba sakomando punqtidan srol is azimuthisa da vertikal uri kuT-xis Semcveli brZanebis Sesrul ebis Sesamowmebl ad.

sacecxle wertil is aRWurvil obaSi Sedis setyvis sawinaaRmdego raketa, roml is amJamad gamoyenebul i tipis teqnikiuri parametrebi moyvanilia naxazze 18. rogorc am naxazidan Cans, raketis diametri/kalibri Seadgens 55 mm, xolo sigrZe 910 mm. raketaSi moTavsebul ia 400 g makristal ebeli reagenti, roml is gabneva Rrubel Si warmoebis 34 wamis ganmavlobaSi. raketis gaSvebis adgilze haeris temperatura SeiZleba icveli ebodes -5dan +50⁰-mde. Senaxvis sagarantio vadaa 3 weli.

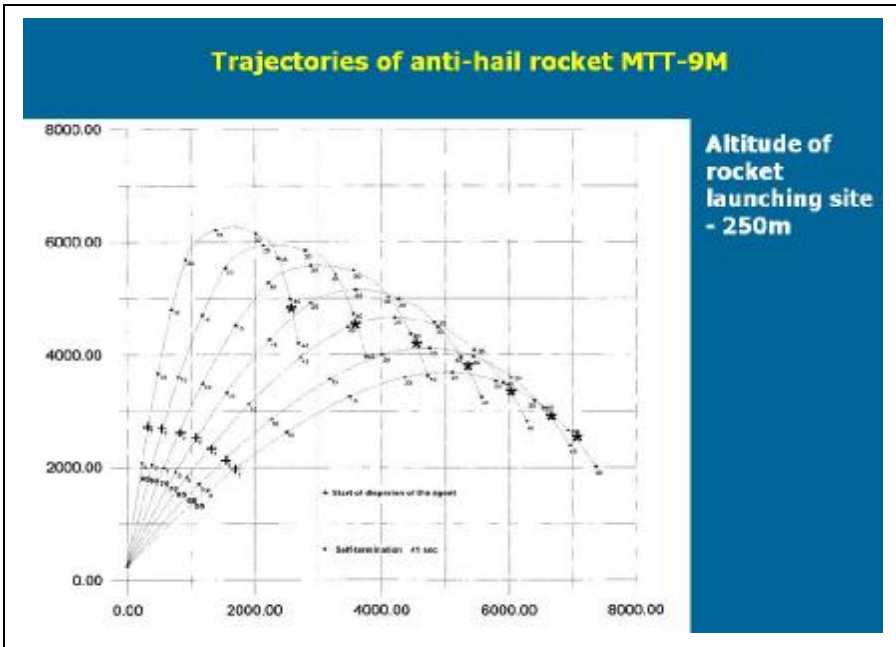
Technical parameters

Length of the container, mm	1045
Outside diameter of the container, mm	60
Length of the rocket, mm	910
Diameter of the rocket, mm	55
Total weight of the rocket with the container, kg	3,45
Weight of the agent, kg	0,4
Initial velocity, m/sec	80
Working time of the engine, sec	4
Time of dispersion, sec	34
Time of self-destruction, sec	41
Working temperature range, T°C	from -5 to +50
Temperature range for storage, T°C	from -30 to +50
Warranty, years	3



nax.18. bul gareTis setyvasTan brZolis samsaxurSi amJamad gamoyenebul i raketis MTT9M teqnikiuri parametrebi

raketis traektoriebi zRvis donidan 250 m simaR-
l eze mdebare gamSvebi danadgaris sxvadasxva. verti-
kal uri kuTxeebisaTvis naCvene bia naxazze 19.



nax.19. setyvis sawinaaRmdego raketis mtt-9m traektorie-
bi.

masze muqi j vreb iT aRniSnul ia raketidan reag-
entis gamoyofis sawyisi (7wm) da sabol oo (41 wm)
momentebi, xol o patara varskvl aviT (*) – raketis
TviTI ikvidaciis momenti gaSvebidan 45-e wamze. naxa-
zidan Cans, rom raketis moqmedebis maqsimal uri si-
maRI e icvl eba Sual edSi zRvis donidan 4.0-6,2 km,
xol o moqmedebis radiusi 2,5-dan 7 km-mde. amrigad,
dasacav teritoriaze sacecxl e wertil ebis moqmede-
bis radiusis minimal uri gadafarvis pirobebSi man-
Zil i maT Soris unda Seadgendes ara umetes 12-13 km.

5. kaxeTsa da bul gareTSi setyvasTan brZol is samuSao-
Ta warmoebis Sedarebi Ti anal izi

bul gareTSi 1960-iani wl ebis Sua periodSi dawyebul i setyvasTan brZol is sacdel -sawarmoo samuSaoebi mni Svnel ovanwil ad eyrdnoboda saqarTvel oSi, da kerZod kaxeT-Si, warmoebul i samuSaoebis gamocdil ebas. bul gareTSi setyvasTan brZol is samsaxurSi 1970-ian wl ebSi gamoyenebul i radiol okatorebi, saraketo teqnika, zemoqmedebis meTollogia da misi efeqrurobis dadgenis principebi TiTqmismTI ianad gadmotanil i iyo kaxeTSi setyvasTan brZol is praqtikidan, rac aixsnoboda dasacavi teritoriebis fizikur-geografiul i pirobebis didi msgavsebiT. bul garel i kol egebi xSirad stumrobdnen Tel avisa da sxva gasamxedroebul nawil ebs, special istebs Soris mimdinareobda gamocdil ebis nayofieri gaziareba.

es garemoeba ganapirobebda imas, rom kaxeTis regionSi 1980-ian wl ebSi ganvitarebul i setyvasTan brZol is Cvensmier zemoT ganxil ul i teqnol ogia TiTqmism anal ogiuri iyo bul gareTis setyvasTan brZol is samsaxurSi danergil i teqnol ogiisa, Tumca zemoqmedebis Casatarebl ad saWi ro informaciis damusaveba da operaciebis avtomatizacia jer kidevim wl ebSi iq ufro Tanamedrove doneze warmoebda, vidre saqarTvel oSi.

1990-iani wl ebidan bul gareTSi setyvasTan brZol is samuSaoebi ar Sewyvetil a. piriqiT, gasul 20 wel iwadSi es samuSaoebi, dasavl eTis ganvitarebul qveynebsi gamoyenebul i axal i teqnol ogiebis gaTval iswinebiT, ufro maRal doneze iqna ayvanil i, rasac mowmobs bul gareTis setyvasTan brZol is samuSaoebis zemoT moyvanil i mimoxil va. amitom, saqarTvel oSi setyvasTan brZol is samuSaoTa arDgenis gzazerT-erT mTavar amocanas warmoadgens im teqnol ogiuri siaxl eebis gamovlena, roml ebi c miRebul iqna bul garet-

TSi 20 wl is manZil ze da saqarTvel oSi maTi danergvis Sesazl ebl obaTa garkveva.

kaxeTis regionSi 1980–ian wl ebSi da bul gareTSi amJamad gamoyenebul i setyvasTan brZol is zemoT aRweril i teq-nol ogiebIs Sedar eba saSual ebas iZl eva gamovitanot Sem-degi ZiriTadi daskvnaebi:

1. setyvasTan brZol is konceptual uri model i, romel ic 1980–iani wl ebisTvis damuSavda mraval i qveynis special istTa mier da romel ic eyrdnoboda mzar di konveqciuri uj redis gadametcivebul areSi makonkurirebel i Canasaxebis koncentraciis xel ovnurad gazrdis gziT setyvis zrdis procesis SeCerebis ideas, kvl avac warmoadgens setyvasTan brZol is samuSaoTa safuZvel s.

2. setyvasaSiS konveqciur uj redSi makristal ebel i regentis Setanis saukeTeso saSual ebas warmoadgens setyvis sawinaaRmdego raketa, roml is teqnikiuri parametrebi uzrunvel yofs radiol okatoris saSual ebiT Rrubel Si SerCeul i gadametcivebul i areebis dedami wis zedapiri dan di stanciur damuSavebas.

3. setyvasTan brZol is samuSaoebi kvl avac eyrdnoba setyvasaSiSi da setyviანი Rrubl ebis 1980–ian wl ebSi SemuSavebul kl asifikacias, roml is mixedviT gamoiyofa erTuj rediani, mraval uj rediani da superuj rediani Rrubl ebi maTTvis damaxasiaTebel i struqturita da ganvitarebis Taviseburebebi T.

4. setyvasTan brZol is operaciebis dasagegmad da Casatarebl ad aucil ebel pirobas warmoadgens aerosinoptikuri monacemebis arseboba, roml ebic konveqciuri Rrubl is saTanado maTematikuri model is gamoyenebiT kompiuterul ad unda damuSavdes. miRebul i Sedegi unda gaanal izdes radiol okaciuri da Tanamgzavrul i dakvirvebebis monacemebTan erTad.

5. radiol okaciuri dakvirvebebis monacemebi kompiuterul i programiT unda muSavdebodes, real ur droSi xel misawvdomi iyos zemoqmedebis xel mZRvanel istvis da cif-

rul i formiT inaxebodes arqivSi. setyvasaSiS an setyvia n Rrubl ebze dakvirvebi sas kompiuterul i programa unda iT-val iswinebdes aerosinoptikuri da radiol okaciuri monacemebis safuZvel ze rekomendaciebis gamomuSavebas konkretul ujr edSi Sesatani reagentis raodenobisa da zemoqmedebis gansaxorciel ebl ad SerCeul i sacecxl e wertil is Sesaxeb.

6. sacecxl e wertil ze sakomando punqtidan miRebul i zemoqmedebis Casatarebel i brZanebis Sesrul eba avtomatur reJimSi unda warmoebdes, rac gamoricxavs raketebis gaSvebaSi subieqturi Secdomebis daSvebas. yvel a gaSveba da misi Sesrul eba kompiuterul ad unda fiqsirdebodes da inaxebodes arqivSi. principul ad gansxvavdeba sacecxl e wertil is bul gareTSi gamoyenebul i sxva teqnikiuri aRWurvilo-bac. mzis panel i uzrunvel yofs saakumul atoro batareis saimedo moqmedebas, rac adre moqmed sistemebSi moiTxovda benzinze momuSave el eqtrogenerator ebis gamoyenebas. amastan dakavSi rebiT, ar aris gamoricxul i saqarTvel ospirobebSi qar ian maRal mTian sacecxl e wertil ebze paral el urad gamoyenebul i iqnas qar is el eqtrogenerator ebic.

7. setyvasTan bZol is operaciebis Casatarebl ad bul gareTSi gamoyeneba erT sistemad gaerTianebul i sami qvesistema:

* **MRL5 IRIS** radiol okaciuri dakvirvebis qvesistema, romelic real ur droSi uzrunvel yofs sakomando punqtze informacii miwodebas meteorol ogiur movl enebze dakvirvebis da maTi prognozi rebi s Sesaxeb;

* **FIRE HAIL** kompiuterul i programa, romelic uzrunvel yofs monacemTa momzadebas Rrubl ebze zemoqmedebis Casatarebl ad da iZl eva rekomendaciebs sacecxl e wertil ebis SesarCevad;

* **FIRE W** – sakomunikacio da sainformacio qvesistemaa, romel sic Sedis raketebis gaSvebis da misi kontrol is special uri kompiuterul i programa.

8. zemoT CamoTvl il i sami ve qvesi stemi s mier gamomuSavebul i informacia da brZanebebi Tavs iyris sakomando punqtis central ur kompiuterSi, romel ic uzrunvel yofs zemoqmedebis operaciebis detal uri dokumentaciis Sedgenas.

ganxil ul i 8 punqtidan pirvel i sami kaxeTSi warmoebul i setyvasTan brZol is samuSaoebSi c iyo miRebul i, rac mowmobs imas, rom bol o 20 wl is manZil ze bul gareTSi setyvasTan brZol is strategia principul ad ar Secvl il a. meoTxe punqtSi ukve Semovi da aerosi noptikur monacemTa kompiuterul i damuSavebis faqtori, roml is maRal doneze real izeba damokidebul ia konveqciuri Rrubl is maTematiku ri model is SerCevaze da gamoTvl ebis Sedgenis saTanado formiT warmodgenaze. saqarTvel oSi setyvasTan brZol is samuSaoTa aRdgenis SemTxvevaSi mi zanSewoni l ad unda Cai Tval os model uri gamoTvl ebis Casatarebl ad Rrubl is sakmaod srul i model is gamoyeneba, romel ic SesaZl ebel s gaxdis sandoobis maRal doneze radiol okaciuri monacemebis gamoyenebiT Sefasdes cal keul setyvasaSi S Rrubel ze zemoqmedebis efeqturoba.

me-5 punqti mTl i anad moicavs radiol okaciuri dakvirvebebis kompiuterizacias, rac principul ad axal safexurze ai yvans monacemTa damuSavebi sa da warmodgenis sistemas. rogorc zemoT iyo naTqvami, kaxeTSi warmoebul samuSaoebSi l okatoris ekranze vizual urad aTvl il i monacemebi xel l iT registri rdeboda Jurnal Si, gazrdil i amrekl adobis zonis parametrebis mixedvit Rrubel Si Sesatani reagentis raodenoba isazRvreboda tipiuri pi robebi saTvis Sedgenil i cxril ebiT, xol o sacecxl e wertil ebis SerCeva xdeboda zonis konturebis pl anSetze datani T. yvel a am proceduris kompiuterizaciis Sedegad zemoqmedebis operacia mni Svnel ovnad Cqardeba da gamoiricxeba gadawyvetil ebis miRebaSi subieqturi faqtori. zemoqmedebis xel mZRvanel s meti dro rCeba kompiuteris mier rekomendebul i brZanebebis Sesafasebl ad da, sabol ood, zemoqmedebis optimal uri variantis SesarCevad.

me-6 punqti agreTve iTval i swinebs sacecxl e wertil ze warmoebul i samuSaos srul modernizacias. cecxl is warmoebis anu raketebis gaSvebis avtomatizebul i sistema gamoricxavs subieqturi Secdomebis daSvebas, agreTve iTval iswinebs am procesis detal ur registracias da kontrol s, rac gansakuTrebul mniSvnel obas iZens sagangebo SemTxvevis pirobebSi (saraketo sistemis avariul i funqcionireba, raketis TviTgasvl ael Weqis dros da sxv.)

me-7 punqtsi ganxil ul i qvesistemebis saqarTvel os pirobebSi danergva faqtobrivad zemoT ganxil ul i modernizaciis principebis Sejamebas warmoadgens, rac uzrunvel-yofs saqarTvel oSi gavil il i 20 wl is manZil ze dagrovil i CamorCenis daZl evas da setyvasTan brZol is samuSaoTa Tanamedrove doneze warmoebas.

garda amisa, saWi ro iqneba kaxeTSi adre warmoebul i ekologiuri monitoringis ganaxleba setyvasTan brZol is samuSaoTa garemoze zemoqmedebis Sesafasebl ad.

Tavi II. zvaſsawinaaRmdego RoniſZiebebi ſaqarTvel os bunebrivi pirobebi xel s uwyobs Tov- l is zſvebis gavr cel ebas. zſvaſaSiſia ara mxol od cal- keul i dasaxl ebul i punqti, aramed ſaavtomobil o magiſ- tral ebi, el eqtro gadamcemi xazebi, rekreaciul i daniſ- nul ebiſ ſxvadaſxva obieqti. Tu imasac gaviTval iſwinebT. rom, ſaqarTvel os teritoriis 56% zſvaſaSiſ zonaſi mde- bareobs da teritoriis 20%-ze zſvavi yovel wl iurad Ca- modis, cxadi gaxdeba zſvebis ſeſwaviſ aucil ebl oba da zſvaſsawinaaRmdego rekomendaciebiſ ſemuſaveba.

6. zvaſsawinaaRmdego RoniſZiebebiſ kl aſiſfikacia arſe bul i l iteraturul i wyaroebis anal izi da mra- val wl iuri kvl ebebi, romel ic hidrometeorol ogiis in- ſtitutſi warmoebda, ſeſaZl ebl obaſ iZl eſa Catardes zvaſsawinaaRmdego RoniſZiebebiſ kl aſiſfikacia, romel ſac ſafuZvl ad edeba zvaſsawinaaRmdego RoniſZiebebiſ kate- goriebi (profil aqtiſkuri, ſainJinro, zſvavſemakavebel i da zſvavdamcavi). zvaſsawinaaRmdego RoniſZiebebi ſeiZl eba da- iyos or jgufad: paſiur da aqtiur RoniſZiebebad (cxr.2).

cxril i 2. zvaſsawinaaRmdego RoniſZiebebiſ kl aſiſfikacia

#	paſiuri	#	aqtiuri
1	zſvaſaSiſi teritori- ſ gamokvl eſa, uſafr- Txo adgil iſ ſerCeſva	4	RoniſZiebebi zſvaviſ keraſi (droebiTi, kapi tal uri, ſa- inJinro nagebobebi, gaty- aneba)
2	zſvaviſ prognoziſ me- Todebiſ damuſaveba (cal keul i zſvavſemkre- biſaTviſ, mTiani regi- oniſaTviſ)	5	RoniſZiebebi zſvaſsadenſi (zſvaviſ amcil ebel i, obieq- tiſ Tavze gamſvebi, dam- ſi el i nagebobis mowyoba)
3	zvaſsawinaaRmdego ſa- meTval yuro ſamſaxu- riſ ſeqmna (ſaguſago- ebiſ mowyoba, ſamaſve- l o razmebiſ ſeqmna)	6	RoniſZiebebi zſvaviſ gamozidviſ konuſſi (zſvaviſ amcil ebel i, damſi el i, damamuxruWebel i da gamaCerebel i nagebobebiſ mowyoba)

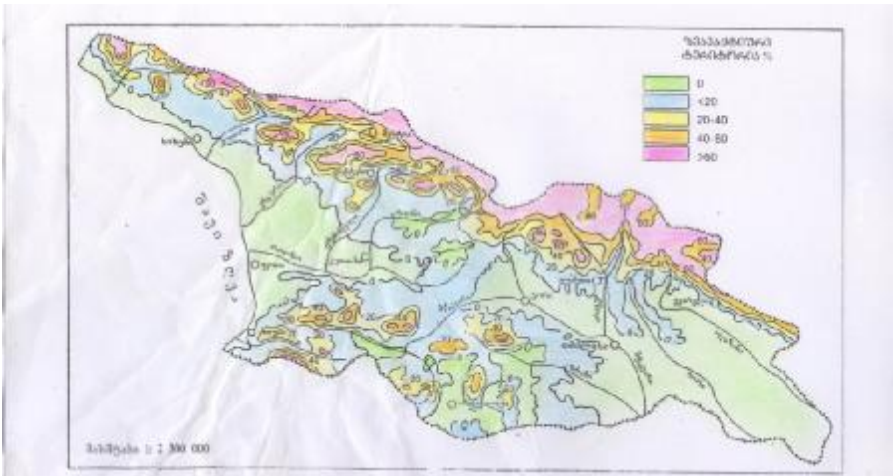
pasiuri zvasawinaaRmdego RonisZiebebi ar iTval is-
winebs zvasemkrebis teritoriaze raime special uri sa-
muSaos Catarebas (sainJinro, gatyianeba, dateraseba da
sxv.), Tovl is safarze zemoqmedebas (Tovl is moZraobaSi
mosvl is xel SemSl el i farebi, Robeebi, badeebi, Tovl ze
gimiuri zemoqmedeba, datkepnva da sxv.), Tovl is safaris
moZraobaSi moyvanas (afeTqeba, karnizebis moxerxva da
sxv.), zvavebis bunebriv procesebSi Carevas (mimarTul ebis
Secvl a, damuxruWeba, gaCereba da sxv.). pasiuri RonisZi-
ebebidan hidrometeorol ogiis institutSi dReisaTvis
SemuSavebul i zvavebis prognozis meTodebi iyofa or
j gufad: 1. cal keul i zvasemkrebebis an mcire farTobis
mqone teritoriebze zvasaSiSi periodis dadgomis prog-
nozirebis meTodebi; 2. SedarebiT did teritorize fonu-
ri prognozis meTodebi. saqarTvel oSi Camosul i zvavebis
saerTo raodenobis 80% axal mosul i Tovl isagan warmo-
iqmneba. institutis mecniertTa mier SemuSavebul ia yvel a
genezisis zvasis Camosvl is prognozirebis meTodi, romel
ic danergil ia saqarTvel os garemosa da bunebrivi re-
sursebis dacvis saminstros monitoringisa da progno-
zirebis centrSi, saidanac mosaxl eobas da dainterese-
bul organizaciebs droul ad miwodebaT informacia mo-
sal odnel i zvasaSiSroebis Sesaxeb.

aqtur zvasawinaaRmdego RonisZiebebSi mTavari ro-
li adamians miekuTvneba. igi cdil obs zvasis keris ze-
dapiris formis Secvl as, gamoiwvios zvasis profil aqti-
kuri Camosvl a an xel i SeuSal os mis warmoqmnas. aqtu-
ri zvasawinaaRmdego RonisZiebebis Catareba SesaZl ebe-
l ia zvasadenSi, zvasis gamozidvis konusSi da zvasis
keraSi.

7. saqarTvel os zvasaSiSi teritoriebi

saqarTvel os zvasaSiSi teritoriebi detal urad ar-
is Seswavl il i da Sedgenil ia zvasaSiSroebis rukebi.
Tval saCinoebisaTvis warmovadgent teritoriis zvavaqti-
urobis rukas (nax.20), romel ic gviCvenebis Tu teritoriis
ra nawil ze SeiZl eba warmoiqmnas zvasi, anu teritoriis

ra nawil ia aqtiuri zvavebis warmoqmnis Tval sazrisiT. rukaze warmodgenil ia nul ovani, < 20-ze, 20-dan - 40-mde, 40-dan 60-mde da >60 -ze zvavaqtiuri teritoriebi;

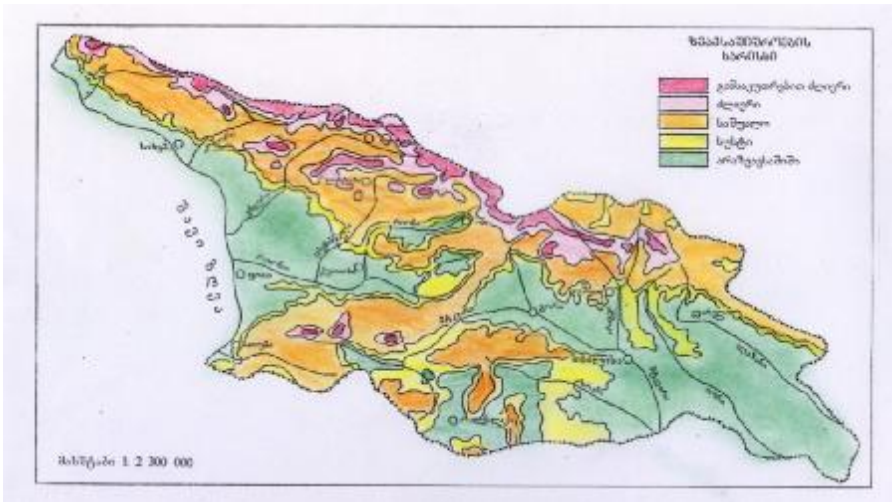


nax.20. saqarTvel os teritoriis zvavaqtiurobis ruka

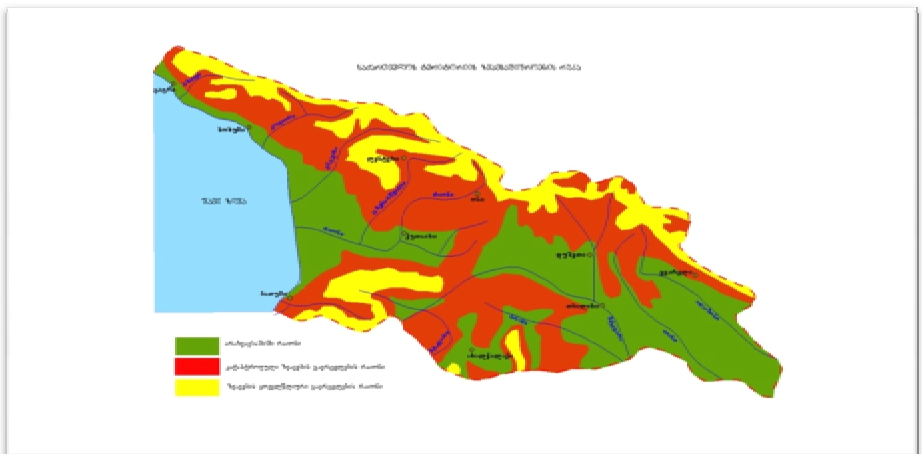
zvavsasiroebis otxi Ziritadi raodenobrivi maxasateblis (teritoriis zvavaqtiuroba, zvasemkrebebis sixsire, zvavebis Camosvl is sixsire da zvasasisi periodis xangrZi ivoba) mixedvit Sedgenil ia saqarTvel os teritoriis zvasasiroebis ruka, sadac gamoiyo gansakutreb iT ZI ieri, ZI ieri, saSual o, susti da arazvavsasisi raionebi (nax.21). zemoT CamoTvl il raionebs ukaviaT saqarTvel os teritoriis 12, 33, 8 da 3% Sesabamisad.

Sedgenil ia agreTve katastrofuli da sistematuri zvavebis gavrcel ebis ruka (nax. 22).

rogorc ukve arvniSneT, saqarTvel os teritoriis 56% zvasasisi zonaSi mdebareobs da amastan teritoriis 20%-ze, miuxedavad imisa uxvTovl iania Tu ara zamTari, zvavi yovel wl iurad Camodis. rac Seexeba teritoriis 36%-s, swored aq xdeba rogorc sporaduli (2-3 wel iwadSi erTxel an aTeul wel iwadSi erTxel), ise sistematuri (rodesac zavis parametrebi scil deba Tavis Cveul sazRvrebs) zvavebis Camosvl a, romel ebic gamoirCeva didi damangreveli Zal iTa da msxverpl iT.



nax.21. saqarTvel os zvasaSi Si raionebi s ruka



nax.22. saqarTvel oSi katastroful i da sistematuri zvalebis gavr cel ebis ruka

8. zvasawi naaRmdego Roni sZiebebi s kategori ebi msofi ios mTian raionebsi zvasawi naaRmdego brZo- l is mra val i meTodi arsebobs. maTi ganxorciel eba upir-

vel esad iwyeba teritoriis zvasaSiSroebis SefasebiT, tyis masivebis dacviTa da maTi aRdgeniT, mosaxl eobis usafrTxoebis uzrunvel yofiT. zvasaSiSi raionis usafrTxoebis uzrunvel sayofiT aucil ebel ia:

1. adgil mdebareobis anal izi;
2. amindis prognozi. maT Soris zvasaSiSroebis prognozi;
3. saSiSroebis kl asifikacia;
4. moqmedebis gegma.

zavsawinaaRmdego nagebobebis daproeqtebis da sxvadasxva RonisZieebis gatarebis gasaTval iswinebel ia zvavebis reJimi da maTi xasiaTi, aseve Tovl is safaris simaRle, landSaftis morfologia, Tavad dasacavi obiectisaTvis Sesabamisi zavsawinaaRmdego konstruqciebis da RonisZieebis SerCeva (cxr.3).

9. zavsawinaaRmdego nagebobebi

zvavebisagan dacvis strategia iseT zavsawinaaRmdego nagebobebis mSenebl obas gul isxmobis, romelic adami-anebis usafrTxo cxovrebaTan aris dakavSirebuli. uxsovარი დრიდან აღებსა და კავკასიაში სახლებს ისე აწესებდნენ, რომ სახლის უკანა კედელი ფერდობზე ყოფილი მიწის ნივთიერების, ხოლო სახლის სახურავს ისეთი დარღვევები უნდა ჰქონოდა, რომ დარღვევის მასას დაზარალებული იქნებოდა ისეთი ფორმა, რომ სეისმური ვიწროების მწველი იქნებოდა (ნა.23). ასეთი პრინციპის არსებობის რეალური მაგალითი არის დავოსი, რომელიც დავიპირველ აგებულანავე 1602 წლის 70 სახლთან ერთად დაინგრა. ადგილის შემდეგ 1817 წლის კამოსულმა ვიწროს მოქოლიდან დაიშალა დაფარა და სწორედ ვიწროს ფორმის აგებულების კედლის ვიწროობის გარეშე, 1968 წლის 25 იანვარს კამოსულმა ვიწროს მოქოლიდან დაიშალა დაფარა (ნა.24).

cxril i 3. zvasawinaaRmdego Roni sZiebebi s kategori ebi

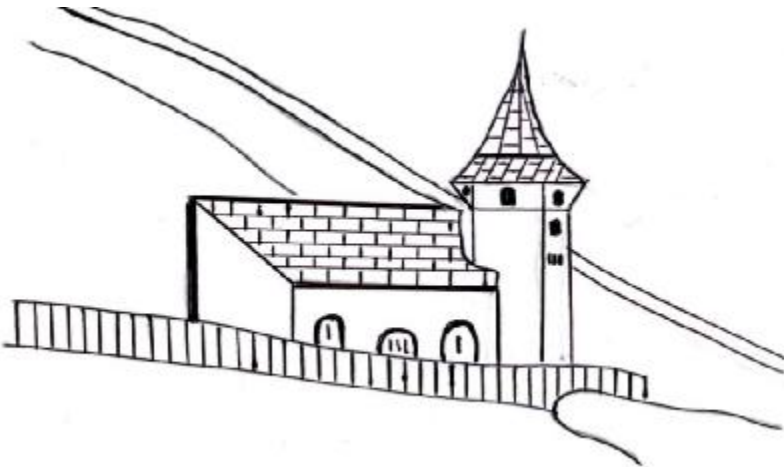
#	Roni sZiebi s kategori a	Roni sZiebi s mizani
I. profil aqtikuri		
1	zvasawinaaRmdego sam-saxuris organizeba, dakvirveba, prognozi da informaci s gavrceleba	zvavebi s Camosvl i s prognozi. mosaxleobi s drouli informaci reba da zvasaSiSi zoni dan gayvana
2	zvavebi s xel ovnuri gamowveva	Tovl i s safaris mdgradobi s prognozi s safuZvel ze zvavebi s regul arul i CamoSveba srol iT, afeTqebi T, karnizi s moxerxvi T da sxva.
II. zvasi amaci l ebel i sistemebi		
1	Tovl Semakavebel i nagebobebi s mowyoba (Robe, kedeli, damcavi fari, xidi, mavTul xl arTi). ferdobi s dateraseba da gatyianeba	Tovl i s safaris mdgradobi s mi Rveva zvavebi s warmoqmni s zonebSi, maT Soris ferdobebi s daterasebi s da ganaSenianebi s gziT, ri Tac moxdeba Tovl dagrovebi s regul ireba
2	Tovl Semakavebel i Robeebi s da farebi s sistemis mowyoba	Tovl dagrovebi s acil eba zvavebi s warmoqmni s zonebSi
III. zvavebi sagan dacva		
1	mimarTul ebi s Semcvl eli nagebobebi s Seqmna kedeli, xel ovnuri zvasadeni, zvasi smWreli	zvasi s mimarTul ebi s Secvl a, zvasaSiSi obieqtis dacva
2	SemaCerebel i da Semaferxebel i nagebobebi s mowyoba: damba, borcvi, tranSea	zvasi s SeCereba da misi gadaadgili ebi s Seferxeba
3	zvavgamSvebi nagebobebi s ageba: gal erea, estakada, farduli	zvavebi s gaCereba obieqtis Tavze an maT qvemoT



(a)

(b)

nax.23. Sesabamisi konstrukciebi T sacxovrebel i saxl ebis dacva zvavebisagan



nax.24. RvTismSobl is taZari davosSi (Sveicaria)

saqarTvel oSi zvavsasSiSroebis gauTval iswinebl obis mraval i saval al o magal iTis moyvana SeiZl eba. aseTia 1987 wel s svaneTSi, sofel JamuSSi zvavis Sedegad dangreul i axal i nagebobebisa da 26 adamiანis tragikul i bedi, roca mxol od svanuri koSki gadarCa, radgan swo-

red misma kedel ma Seasrul a zvvismWrel is funqcia (nax. 25)



nax. 25. 1987 wel s sof JamuSSi (mestiis municipal iteti) zvvsv gadarCenil i svanuri koSki

mTiani raionebis mosaxl eoba zvvvebisagan dasacavad miwurebsa da fardul ebs afarebda Tavs. 1805 wel s al - pebSi simpl onis uRel texil ze napol eonis brZanebiT yvelaze zvvsvaSiS monakveTebze pirvel i gal erea aSenda. gal erea rkinigzisa da saavtomobil o gzebis erT-erTi saimedo dacvis saSual ebaa. aseTi gal ereebi gvxxvdeba yirgizeTSi, kavkasiaSi, kerZod ki saqarTvel os samxedro gzaze (nax..26).

me-18 saukunidan fiqrobden Tu rogor SeekavebinaT Tovl i ferdobze: iTxreboda ferdobebi, zvvsv mowvvetis adgil as xdeboda boZebis Casma da es martivi konstruqciebi Robeebs mogvagonebdnen. zvvsvaSiSi ferdobebis pirvel i sainJinro ganaSenianeba 1868 wel s graubiudenSi (Sveicaria) moxda. zvvsvaSiS ferdobze 19 qvis Robe 17 rigad aSenda, romel Ta jamuri sigrZe 412 metrs Seadgenda. mas Semdeg am ferdobze zvvsv ar Camosul a. dReisaTvis qvis Robeebi rkina-betonis, xis, al uminis, foladis, pl astmasis martivi konstruqciebiT icvl eba. pl as-

tmasisa da neil onisagan amzadeben Tovl is Semakavebel badeebs (nax.27,28).



nax.26. zvasawinaaRmdago gal erea saqarTvel os samxedro gzaze



nax. 27 Tovl is Semakavebel i pl astmasis bade



nax. 28 Tovl is Semakavebel i rkinis bade

Tanamedrove zvasawinaaRmdego Robeebis erTi metris Rirebul eba 500 dol ars Seadgens. magal iTad, Sveicariis erT-erTi dasaxl ebul i punqtis - sen-antonionis 150 adgil obrivi mosaxl is dasacavad milion naxevari dol ari gamoiyofa. arsebobs sxvadasxva saxeobis zvavSemakavebel i nagebobebi. mag. sanatorium "saxal inis" dasacavad xis Tovl Semakavebel i farebi gamoiyeneba, roml ebic msxvil i fol adis trosebit aris mimagrebul i mTis Txemze. es farebi aTeul i wel ia icavs sanatoriums zvavebisagan

rig qveynebsi zvais mimaRTul ebis Semcvl el dambebs zvais siCqaris Sesasustebl ad da Sesakavebl ad ageben. aseTi nagebobebi bevria al pur qveynebsi, magal iTad ol - impiur sofel s insbruks didi zvasawinaaRmdego damba icavs. aseTi nagebobebi bevria agreTve xibinebsi qal aq kirovskis raionSi.

zvais amcil ebel i nageboba Tovl is zvais mimaRTul ebis Sesacvl el adaa gamiznul i. SesaZl ebel ia rkinabetonisagan an sxva masal isagan agebul i dambis, kedl is, qvayril is an miwayril is gamoyeneba, aseve zvais mimaRTul ebis Secvl a xel ovnuri zavsadenis gayvani Tac SeiZl eba. erT-erT magal iTad ganvixil avT sof. Rurtas (xu-

I os raioni), sadac 1971 wel s Camosul ma zva vma daangria sacxovrebel i saxl ebi da 22 adamiani imsxverpl a. institutis TanamSroml ebis mier, adgil obrivi mikrorel iefis, zva vSemkrebebis morfometriul i da dinamikuri maxasi- aTeb l ebis dadgenis safuZvel ze 1984 wel s SemuSavda sofl is dacvis zva vsawinaaRmdego Roni sZi eba (nax.29).



nax. 29. xel ovnuri zva vsadeni s magal iTi (sof.Rur ta)

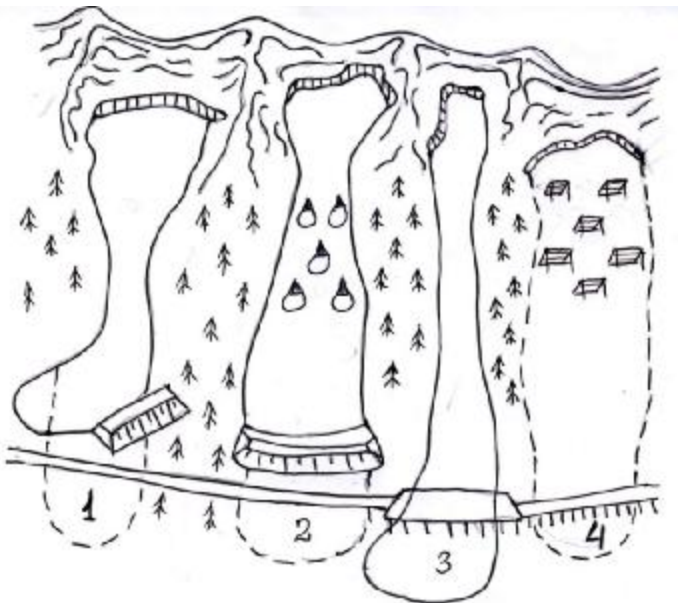
damrec ferdobze, sadac xdeboda zva vis gaSl a, aSenda zva vis mimarTul ebis Semcvl el i ori damba. 7m simaRI isa da 50-55 m sigrZis pirvel i dambis daniSnul ebas zva vis siCqarisa da dartyms Zal is Semcireba da, nawil obriv, mimarTul ebis Secvl a warmoadgenda, xol o meore dambis (simaRI e 10 m, sigrZe 190-200 m) daniSnul ebas uSual od zva vis mimarTul ebis Secvl a. am meore dambis gaswrviv xel ovnuri zva vsadeni iqna gayvanil i. garda am RonisZiebis a, gaTval iswinebul i iqna isic, rom herimardos ferdobze, sadac es sofel i aris gaSenebul i, aucil ebel i iyo utyeo monakveTebis wiwvovani j iSis xe- ebiT gatyianeba da arsebul i tyis gaCexvis akrZal va. am

RonisZiebebis Semdeg sofl i sTvis zvavs zaral i aRar mi-uyenebia.

1885 wel s pirvel i betonis kedel i saqarTvel os sam-xedro gzaze zvav "bodosagan" dasacavad aSenda.

zvavis moZraobis Seferxeba an SeCereba xdeba zigzagovani monakveTebis SeqmniT, rac Sesazl ebel ia mizanmi-marTul i afeTqebebis gziT. aseTi meTodi espanetis piri-neis mTebSi gamoiyeneba. zvavsawinaaRmdego nagebobebis simtkices da saimedoobas Tavad zvavi gansazRvavs. xibi-nebSi, al pebSi, iaponiis mTebSi Catarebul i RonisZiebebi miuTitebs, rom aucil ebl ad gasaTval iswinebel ia adgil obrivi pirobebi da zvavis xasiaTi.

aqm principis gansaxorciel ebl ad zogjer gasaTval iswinebel ia kompl eqsur RonisZiebaTa gatareba (nax. 30).



nax. 30. zvavebisagan dacvis kompl eqsuri sistema. 1. zvavis mimarTul ebis Semcvl el i damba; 2. zvavis Semaferxebel i borcvebi da zvavSemakavebel i damba; 3. zvavsawinaaRmdego gal eria. 4. Tovl Semakavebel i nageboba.

10. asafeTqebel i nivTierebebis da artil eriis gamoyeneba

aSS-Si zvavebis profil aqtikuri CamoSvebisatvis gamoyeneba naRmebi da satyorcni yumbarebi. satyorcni yumbarebis gamoyenebis SemTxvevaSi ramdenime sacecxl e poziciidan aris SesaZl ebel i didi raionis kontrol ireba. aRniSnul i meTodi gamiyenes ol impiuri TamaSebis dros skvo-vel iSi, gasul i saukunis 60-ian wl ebSi, roca ori saaTis ganmavl obaSi ocdaaTamde zvavSemkrebidan Camovida zvavi.

zvavsasiS zonaSi afeTqeba SesaZl ebel ia Semdeg SemTxvevebSi:

1. erTi ferdobidan zvavis Camosvl is dros aucil ebl ad unda Semowmdes sxva ferdobebic;
2. zogjer, afeTqebis Semdeg Tovl i isev rCeba ferdobze an SesaZl ebel ia mcire zomis zvavis Camosvl a. ferdobebidan zvavebis CamosaSvebad gamoyeneba:

1. tetritol is sabrZol o fugasuri Wurvebi C – 3 da trotil i;
2. seismografiul i denTi;
3. 105 mm-ze nakl ebi kal ibris sabrZol o Wurvebi;
4. gamonakl is SemTxvevaSi – dinamiti.

Tovl is karnizebis CamosaSl el ad gamoyeneba:

1. teqniki 40%-iani Jel atin-dinamiti, romelic ar iyineba;
2. samxedro fugasuri Wurvebi an seismografiul i denTi;
3. karnizis warmoqmnamde SesaZl ebel ia winaswar gaTxril ormoebSi fugasuri Wurvebis ganlageba;
4. SesaZl ebel ia detonatorebis gamoyeneba, kerZod: a) el eqtronul i da cecxl ovani kafsul a detonatorebi an detonatoris zonari; b) detonatori fugasuri WurvisaTvs unda iyos #8 an meti.

aucil ebl ad gasaTval iswinebel ia asafeTqebel i nivTierebebis Senaxvis wesebi.

qvemexs, naRmtyorcns, saraketo mowyobil obebs unda gaaCndes sizuste da Sor manZil ze srol is unari, unda

iyos mobil uri, saimedo da gamoirCeodes marTvis simar-tiviT. sxvadasxva iaraRebs Soris aRsaniSnavia 75 da 105 mm-is kal ibris qvemexebi, aseve 75 mm-is haubicebi. 105 mm-ze meti kal ibris iaraRis gamoyeneba rekomendebul i ar ar-is.

105 mm-iani e.w. ukugorebis armqone qvemexi TiTqmis ar gansxvavdeba 75 mm-iani qvemexisagan rogorc srol is si-zustiT, ise eqspl uataciiTa da sandoobiT. srol is si-Sore misi ufro didia, aseve didia dartyms Zal ac, Tovl ze advil ad gadaadgil deba, misi ganTavseba SesaZl ebel ia rogorc avtomobil ze, ise romel ime pl atformaze. es iaraRi SesaZl ebel ia gamoyenebul i iqnas saavtomobil o gzebis dacvis mizniT. naRmtyorcnebis gamoyeneba SeuZl ebel ia im adgil ebSi, sadac nagebobebi da dasaxl ebul i punqtebia, radgan maTi dazianeba SesaZl ebel ia yumbaris namsxvrevebiT. aseve zemoqmedebis dros aucil ebel ia gzebis gadaketva da gadaadgil ebis SezRudva. gaTval iswinebul i unda iyos usafrTxoebis teqniki s Zi-riTadi principebi.

gasul i saukunis 70-ian wl ebSi saqarTvel oSi saavtomobil o magistral ebze zvavebis profil aqtikuri gamoveva dabombvisa da afeTqebis gziT (eqsperimentis saxiT) saqarTvel os samxedro gzaze tardeboda. instituti aqtiur monawil eobas iRebda zvasaSiSi ubnebis gansazRvraSi, zvavebis dinamikuri parametrebis (zvavis siCqaris, dartyms Zal is, moZravi zvavis simaRl is da konusis maqsimal uri simaRl is) gamoTvl ebSi.

11. Tovl is zvavebisagan dacvis Tanamedrove metodebi

zvavebisagan dasacavad aucil ebel ia rogorc aqtiuri (zvavebTan brZol a), ise pasiuri (zvavebisagan dacva) zvasawinaaRmdego metodebis gamoyeneba.

aqtiur RonisZiebebs miekuTvneba Tovl is safarze zemoqmedebis Tanamedrove sistemis **GAZEX**, **AVALANCHE** (pnevmatური qvemexi) da **DAISYBELL** kompl eqsebis gamoyeneba.

1989 wel s frangul ma firmam 15 - wl iani eqsperimentis Catarebis Semdeg daapatenta **GAZEX** sistema, roml is

daxmarebiT Jangbadisa da propanis narevis saSual ebiT xdeba zvavebis xel ovnurad gamowveva. aseTi sistema msofi ioSi gamoiyeneba rogorc zamTris kurortebis, aseve gzebis, gvirabebis da sacxovrebel i kompl eqsebis dasacavad. 2002 wel s es sistema gamoiyenes ruseTis federaciaSi krasnodaris mxaris "krasnaia pol ianasa" da 2008 wel s kurort "roza xutorSi" (nax. 31).

am sistemas sammagi moqmedeba gaaCnia:

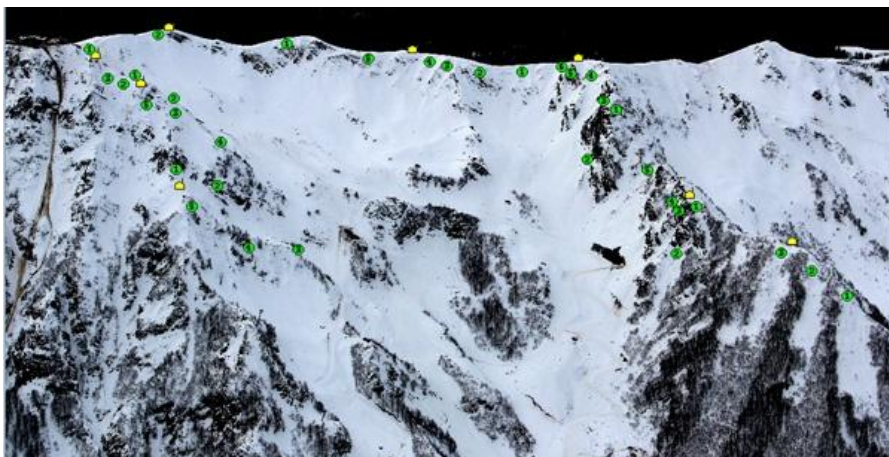
1. iwvevs Tovl is masis rRvevas gazebis wvis Sedegad;
2. iwvevs Tovl is safaris gamkvrivebas;
3. seismuri tal Ra, romelic sistemis amoqmedebisas warmoiqmneba, iwvevs Tovl is masis Camosvl as.
- 4.



nax.31. zvaswinaaRmdego sistema **GAZEX**

sistema Sedgeba ori nawl isagan: **SHELTER** marTvis punqtisagan, sadac Jangbadisa da propanis rezervuari, el eqtronul i marTvis sistema, radiosignal ebis mimRebi mowyobil oba, Tovl is safaris parametrebis ganmsazRvre-

I i xel sawyoa moTavsebul i (suraTis marj vena nawil i) da aqtiuri zemoqmedebis ramdenime **EXPLODER** danadgari-sagan. naxazze gamosaxul i erTi aseTi rezervuari momsaxurebas uwevs 5 **EXPLODER**-s (suraTis marcxena nawil i). es aqtiuri zemoqmedebis danadgari warmoadgens metal is mil s, romel ic TavSdeba zvavSemkrebSi da romel Tanac mierTebul ia gazgantari mil ebi. Tavad mil ebi ZiriTad punqtSi ganTavsebul rezervuarTan aris mierTebul i. **EXPLODER**- is SigniT xdeba Jangbadisa da propanis (1:6 wil iT) SeerTeba. es sistema muSaobs zamTris mTel i sezonis ganmavl obaSi nebi smieri amindis pirobekSi da zva-vebis gamowveva SeuZl ia manam, sanam zvavi miaRwevs damangrevel masas da Zal as. mag, kurort "roza xutor"-Si cirksi ganTavsebul ia 34 **EXPLODER** danadgari (nax.32).



nax. 32. kurort "roza xutorSi" ganTavsebul i
EXPLODER-ebi

Tanamedrove zemoqmedebis kidev erT saxeobas warmoadgens pnevmaturi qvemexi **AVALANCHE**, romel mac saarti-lerio iaraRi Secval a. Wurvi-raketa special uri Txevaldi (usafrTxo) komponentebisagan da detonatorisagan Sedgeba. qvemexi SeiZl eba ganTavsdes rogorc stacionarul ad erT garkveul adgil ze, ise Sesazl ebel ia misi ga-

datana muxl uxiani transportiT. misi gasrol is manZil i 2 km-ia (sur.33).



nax.33. pnevmaturi qvemexi **AVALAUNCHE.**

DAISYBELL (e.w."zari) zvavebze aqtiuri zemoqmedebis mesame uaxl esi teqnoI ogiaa, romel ic Znel admisawvdomi zvavSemkrebebis cal keul ubnebze zemoqmedebis SesaZl ebl obas iZl eva. sistema warmoadgens metal is konuss special uri mowyobil obiT, romel ic trosiT aris mimagrebul i vertmfrenze. **DAISYBELL** – is muSaobis principi mdgomareobs imaSi, rom distanciuri inicirebiT xdeba metal is konusSi moTavsebul i Jangbadisa da wyal badis narevis afeTqeba. konusi damzadebul ia maRal i mdgradobis fol adisagan, rac saSual ebas iZl eva daikavos gazebis narevi aal ebande da mimarTos Tovl is safarisaken asafeTqebi ad. (nax.34).

DAISYBELL – is eqspl uatacia damokidebul ia frenis pirobebze, misi gamoyeneba SesaZl ebel ia mxol od dRis

saaTebSi kargi xil vadobis pirobebSi da miCneul ia, rom es warmoadgens am sisi temis nakl s.

garda zemoqmedebis aRniSnul i sistemebisa, zvavebTan sabrZol vel ad amJamad sxvadasxva qveynebSi gamoiyeneba Semdegi tipis zvavsawinaaRmdego raketebi:

1. ППЛ -2,5 Н. kalibri 60 mm, sigrZe – araumetes 850 mm, masa -3 kg, moqmedebis radiusi – 2500 m.



nax.34. zvaSemkrebeze **DAISYBELL** sistemi Tzemoqmedeba.

2.“КИЗИЛ –Т ” reaqtul zvaSawinaaRmdego kompl eqss gaaCnia 650-7000 m-mde gasrol is siSore. gamoiyeneba Znel admisawvdom raionebSi, misi daniSnul ebis adgil ze gadatana xorciel deba vertmfreniT an avtotransportiT Sesabamisi usafrTxoebis teqniki dacviT.

kompl eqsi Sedgeba: 80 mm-iani C-8 sistemis raketebis gamSvebi pul tis mqone mraVal l ul iani danadgaris, **МК** – 52 tipis mikrokal kuratorisa da l azerul i samiznebel i – manZil mzomisagan. misi teqniki maxasiaTebI ebia: kalibri -80mm, gasrol is maqsimal uri manZil i 7000 m, minimal uri – 650 m; raketis masa 11,6 kg; gamSvebi danadgaris ПУ mimmarTvel ebis raodenoba – 5, ПУ- s masa araumetes 150 kg, ПУ savel e mdgomareobi dan sabrZol o mdgomareobaSi gadasvl is dro 8-10 wT.